



# **70th Annual North Star Expo**

**September 13 & 14, 2024**

**Itasca Co. Fairgrounds,**

**Grand Rapids, MN**

**Friday 9-5**

**Saturday 9-1**

**For more information: MN Timber Producers Association**

**218-722-5013**

To: **EQUIPMENT SUPPLIERS/VENDORS**

Subject: ***NORTH STAR EXPO***

The Minnesota Timber Producers Association (TPA) invites you to participate in the 70th Annual North Star Expo, Minnesota's only logging/sawmill/forestry equipment show. The 2024 North Star Expo will be held Friday and Saturday, September 13 & 14, at the Itasca Co. Fairgrounds in Grand Rapids, Minnesota.

Enclosed you will find the following registration materials for the 2024 Expo:

1. Exhibitor Registration Information Booklet
2. Exhibitor Registration Form with Sample Certificate of Liability
3. If you would like a North Star Expo Flyer to post in your business, please call the TPA Office at 218-722-5013 – this can be emailed or mailed to you.

**Registration Process:**

We'd like to give our vendors from 2023 priority to keep their same spots for 2024.

- **For 2023 Vendors who want to keep the same lot or booth in 2024:** Please email us by Friday April 19<sup>th</sup> at [expo@timberproducers.com](mailto:expo@timberproducers.com). Please include your spot number in the body of the email and attach all applicable forms.
- **For 2023 Vendors who want a different space for 2024:** Please notify us you'd like to move, and a potential location by emailing [expo@timberproducers.com](mailto:expo@timberproducers.com) by Friday April 19<sup>th</sup>. We will review those requests in the order we receive them (by email time stamp). If your first choice isn't available, we'll reach out to discuss.
- **For new vendors (those who weren't with us in 2023):** Please send us your desired space in an email to [expo@timberproducers.com](mailto:expo@timberproducers.com) and we'll handle requests for space in the order we receive them.
- Once your space has been confirmed, please mail your payment in full.

**\*Note – again this year all name tags will be held at the vendor registration desk for pickup on September 13<sup>th</sup> and 14<sup>th</sup>**

Please contact the TPA office at (218) 722-5013 with any questions.

We look forward to your participation.

Sincerely,

*Minnesota Timber Producers Association*

# REGISTRATION FORM - NORTH STAR EXPO

September 13 & 14, 2024 - Grand Rapids, Minnesota - Itasca County Fairgrounds

**YOU MUST EMAIL OR MAIL IN THIS FORM TO REGISTER FOR A SPOT**

### EXHIBIT BOOTH / LOT FEES

#### OUTDOOR

Chainsaw/Bandsaw/Firewood Processors/Portable Sawmill vendors in lots 1 - 15.

40' X 50'.....	\$350.00	\$
Electricity.....	\$ 50.00	\$
<b>TOTAL</b>		<b>\$</b>

**\*\* Bring own (200 FT) extension cords!!**

**\*\* Vendors must stay within boundaries of reserved site(s)!**

#### INDOOR

10' X 10'.....	\$300.00	\$
Electricity.....	\$ 50.00	\$
<b>TOTAL</b>		<b>\$</b>

**\*\* Bring own extension cords!!**

**\*\*All indoor booths include one 8' table, 2 chairs, back and side drapes.**

#### WOOD

Pulpwood (firewood:100- inch, less than 6- inch in diameter)  
Sawlogs (2 cords equals 1000 board feet)  
(100-inch, greater than 6 in. diameter)

\$100 per cord / \$50 per 1/2 cord      **TOTAL \$** \_\_\_\_\_  
Special Instructions: \_\_\_\_\_

#### UNLOADING / LOADING EQUIPMENT.

\*Available Thurs. 8am-6 pm Unloading

\*Available Sat. 1pm-4pm Loading Equip.

Forklift Required \*max payload is 8500 lbs.  
Skid-Steer Required

#### Door Prizes:

Dinner: Yes No      Best Load: Yes No

### ELECTRIC POWER INFORMATION

NOTE: Outdoor Lots with power are limited, if you request a site that has power you will be required to pay for power, even if you don't use it. **Power is available in lots: 37,58,64,69,70,71,77,78,79,80,81 &82.** In addition, a generator will be positioned near lots 13 through 21.

**\*\* Bring own (200 FT) extension cords!!**

Type of Exhibit: Check One:

- |  |   |
|--|---|
| <input type="checkbox"/> Saw Mill                          | <input type="checkbox"/> Service & Parts        |
| <input type="checkbox"/> Trucks                            | <input type="checkbox"/> Logging Equipment      |
| <input type="checkbox"/> Splitters/Debarkers/Chippers      | <input type="checkbox"/> Construction Equipment |
| <input type="checkbox"/> Chainsaw/Personal Safety Products |   |
| <input type="checkbox"/> Other _____                       |   |

#### PA Announcements:

(see enclosed flyer for more info)

See enclosed flyer for more information:

(Max. # of announcements available: 30 Friday, 16 Saturday)

\_\_\_\_\_ Announcements on Friday, September 13 (open 9 - 5)

\_\_\_\_\_ Announcements on Saturday, September 14 (open 9 - 1)

\_\_\_\_\_ Total Announcements      **TOTAL \$** \_\_\_\_\_

**\*\* Deadline for announcements - Friday, August 16,2024**

#### Timber Bulletin Advertisement

(see enclosed flyer for more info)

Questions - call 218-722-5013

Two Time Special Rate July/Aug (due 7/1)-Sept/Oct (due 9/2)

Size of Advertisement \_\_\_\_\_ Color \_\_\_\_\_ B/W \_\_\_\_\_

Issue(s) to Run Ad \_\_\_\_\_

E-mail electronic version to: [expo@timberproducers.com](mailto:expo@timberproducers.com)

\*\* applies to NEW advertisers only; regular advertisers billed as normal

**TOTAL \$** \_\_\_\_\_

**TOTAL AMT ENCLOSED \$** \_\_\_\_\_

**CHECKS ONLY**

**NO CREDIT CARDS.**

**Reception at Timberlake Lodge**  
**See Sponsor Letter and Form**

REGISTRATION - PLEASE PRINT CLEARLY - THANK YOU!

Company Name \_\_\_\_\_

Contact Person \_\_\_\_\_

Mailing Address \_\_\_\_\_

Add'l Attendees \_ SEE NAME TAG PAGE

yes for name tags    No  No

City \_\_\_\_\_ State \_\_\_\_\_ Zip \_\_\_\_\_

PH \_\_\_\_\_ FAX \_\_\_\_\_

Cell \_\_\_\_\_ while at the show in Grand Rapids.

EMAIL \_\_\_\_\_

I have read the Registration Information sheet from the vendor packet and agree to abide by all terms, conditions, rules and regulations established by the North Star Expo. **NO REFUNDS WILL BE GIVEN AFTER AUGUST 16, 2024**

AUTHORIZED SIGNATURE \_\_\_\_\_

DATE \_\_\_\_\_

**Return this form with payment to: MN TPA, 324 W Superior St., Ste 903, Duluth, MN 55802 (218) 722-5013** Please attach insurance certificate (sample on back of this form) with registration form and payment. Thank you!

[expo@timberproducers.com](mailto:expo@timberproducers.com)

★ **NORTH STAR EXPO** ★  
**FRIDAY NIGHT RECEPTION**  
**Friday, September 13, 2024**

Friday night September 13<sup>th</sup>, @ 5:30 pm the North Star Expo will host a reception for all North Star Expo attendees and vendors at the Timberlake Lodge



- Free “Heavy” hors d'oeuvres
  - Cash bar
  - Door Prizes
  - Live Band

**TimberLake Lodge: 144 SE 17th St, Grand Rapids, MN**

# North Star Expo

## Sponsorship Opportunities

Sponsoring the North Star Expo gives your business an enhanced opportunity to connect with TPA members, as well as our state's forest products industry. This year, we have **three** sponsorship levels from which to choose:

### **Gold Sponsor: \$1500**

*Benefits include:*

- One complementary booth or lot space at this year's Expo
- Recognition with logo as a Gold sponsor in both the July/August and the September/October issues of the Timber Bulletin
- Enhanced logo on signage and banners at Expo event and reception
- Logo on Powerpoint at Expo Reception with recognition as Gold sponsor
- Verbal recognition as a Gold Sponsor during Expo PA Announcements
- Verbal recognition as a Gold Sponsor during Expo Reception
- Free customized 10-second PA announcements each hour during the Expo

### **Silver Sponsor: \$1000**

*Benefits include:*

- One complementary booth or lot space at this year's Expo
- Recognition with logo as a Silver sponsor in the September/October issue of the Timber Bulletin
- Logo on signage and banners at Expo event and reception
- Logo on Powerpoint at Expo Reception with recognition as Silver sponsor
- Verbal recognition as a Silver Sponsor during Expo PA Announcements
- Verbal recognition as a Silver Sponsor during Expo Reception

### **Bronze Sponsor: \$500**

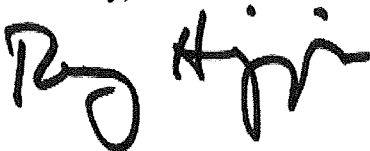
*Benefits include:*

- One complementary booth or lot space at this year's Expo
- Recognition as a Bronze sponsor in the September/October issue of the Timber Bulletin
- Logo on signage and banners at Expo event and reception
- Logo on Powerpoint at Expo Reception with recognition as Bronze sponsor

The North Star Expo will be held on September 13<sup>th</sup> and 14<sup>th</sup> at the Itasca County Fairground, in Grand Rapids, Minnesota

Thank you for your support and I hope to see you at the show.

Sincerely,



Minnesota Timber Producers Association



**MINNESOTA TIMBER PRODUCERS ASSOCIATION  
NORTH STAR EXPO**

**SPONSORSHIP FORM**

**Itasca County Fairgrounds  
Friday & Saturday, September 13 & 14, 2024**

Please type or print all information

Name \_\_\_\_\_ Title \_\_\_\_\_

Company \_\_\_\_\_ Phone \_\_\_\_\_

Address \_\_\_\_\_

City \_\_\_\_\_ State \_\_\_\_\_ Zip \_\_\_\_\_

**Please respond to all four of the following Yes/No prompts:**

**Sponsorship Level (check desired box):**

**Gold (\$1,500) \_\_\_\_\_ Silver (\$1,000) \_\_\_\_\_ Bronze (\$500) \_\_\_\_\_**

**Do you plan to use the Free Booth/Lot that comes with Sponsorship?**

**Yes \_\_\_\_\_ No \_\_\_\_\_**

**Amount Enclosed \$ \_\_\_\_\_**

Signature \_\_\_\_\_

Name (please type) \_\_\_\_\_

Title \_\_\_\_\_

***Please email your logo along with this form to be displayed.***

***Please Complete And Return This Form By Friday, August 18, 2023***

***Or email to: [expo@timberproducers.com](mailto:expo@timberproducers.com)***

**MINNESOTA TIMBER PRODUCERS ASSOCIATION**

**324 W Superior St #903**

**Duluth MN 55802**

**Fax (218) 722-2065**

**FOR FURTHER INFORMATION PLEASE CALL (218) 722-5013**



**MINNESOTA TIMBER PRODUCERS ASSOCIATION  
NORTH STAR EXPO**

**2024 NAME TAG FORM**

Name \_\_\_\_\_ Title \_\_\_\_\_

Company \_\_\_\_\_ Phone \_\_\_\_\_

**Company Representatives for name tags (*Please type or print legibly all information!*)**

Name \_\_\_\_\_ Title \_\_\_\_\_

Name \_\_\_\_\_ Title \_\_\_\_\_

Name \_\_\_\_\_ Title \_\_\_\_\_

Name \_\_\_\_\_ Title \_\_\_\_\_

Name \_\_\_\_\_ Title \_\_\_\_\_

Name \_\_\_\_\_ Title \_\_\_\_\_

Name \_\_\_\_\_ Title \_\_\_\_\_

Name \_\_\_\_\_ Title \_\_\_\_\_

\_\_\_\_\_

\_\_\_\_\_

Signature \_\_\_\_\_

Name (please type) \_\_\_\_\_ Title \_\_\_\_\_

***Please Complete And Return This Form By Friday, August 23, 2024***

Email: [expo@timberproducers.com](mailto:expo@timberproducers.com)

MINNESOTA TIMBER PRODUCERS ASSOCIATION

324 W Superior St #903

Duluth MN 55802

Fax (218) 722-2065

★ **70<sup>th</sup> ANNUAL NORTH STAR EXPO** ★  
**REGISTRATION INFORMATION**

**Itasca County Fairgrounds, Grand Rapids, MN  
September 13 & 14, 2024**

**PLEASE READ PRIOR TO COMPLETING EXHIBITOR REGISTRATION FORM**

**SHOW HOURS**

*Friday September 13<sup>th</sup>*

9:00AM – 5:00PM

Displays Open—Itasca County Fairgrounds

5:30PM

Expo Reception—Timberlake Lodge  
Social Hour, Cash bar, Door prizes,  
“Heavy” Hors D’oeuvres  
(Timberlake Lodge: 114 SE 17<sup>th</sup> Street, Grand  
Rapids)

*Saturday September 14<sup>th</sup>*

7:00-9:00AM

Free Pancake Breakfast—Itasca Co. Fairgrounds  
*Sponsored by McCoy Construction and Forestry*

9:00-1:00PM

Displays Open

**DISPLAYS MUST REMAIN IN PLACE UNTIL 1:00 PM SATURDAY, SEPTEMBER 14<sup>th</sup>**  
**This especially includes large equipment for the safety of all Expo attendees, including  
vendors.**

**RESERVATIONS**

Reservations for lots and booths must be made in advance. All reservations will be made on a first come, first served basis where possible. Last year’s vendors have preference for keeping their spots. **TPA RESERVES THE RIGHT TO CHANGE ANY LOT OR BOOTH LOCATION AS IT DEEMS NECESSARY TO ACCOMMODATE THE LAYOUT OF THE FACILITY.**

**RESERVE LOTS AND BOOTHS BY PHONING (218) 722-5013**

Lots and booths *must **first*** be reserved via email: [expo@timberproducers.com](mailto:expo@timberproducers.com), or by calling (218) 722-5013. Once space is reserved, complete and return the enclosed registration form along with payment to Minnesota Timber Producers Association, 324 W Superior St #903, Duluth, MN 55802. If the registration form and payment are not received within two (2) weeks after making reservations by telephone, reservations may be canceled.

Vendors from last year’s show have priority in reserving space prior to April 19, 2024, as described on page 2 of this booklet.

There will be no refunds after August 16, 2024.

**CERTIFICATE OF INSURANCE**



**A certificate of insurance naming Minnesota Timber Producers Association as additional insured MUST BE SUBMITTED with your registration form indicating your general liability protection in the amount equivalent to that indicated on the enclosed example. No company will be allowed to participate if an insurance certificate has not been submitted.**

**Indoor Display 10 x 10 Booth**

Indoor booths are 10' x 10' at a cost of \$300.00. Included in the booth rental are back and side drapes, one table and two chairs. No staples are to be used on the tables. If you need additional tables and/or chairs please see enclosed flyer in this packet. If you request power, you must bring a very long extension cord.

**Outdoor 40 X 50 LOTS \*\*NOTE\*\* Vendors must stay within boundaries of reserved site(s).**

40x50 Lots are 40' wide and 50' deep at a cost of \$350.00 per lot. TABLE AND CHAIRS ARE NOT INCLUDED WITH THE LOT RENTAL. See enclosed flyer for rental information. Because we have a limited number of lots with power, please reserve a lot with power *only* if you need power. If you require power, you *must* bring an extension cord (40 – 200 ft) and there is an additional fee of \$50 per registration. Power is available in lots:

37,58,64,69,70,71,77,78,79,80,81,82. In addition, a generator will be positioned near lots 13 through 21.

**Please note: some 40x50 lots are on blacktop surface. Nothing can penetrate the blacktop. This also includes tent anchoring. Vendors must bring material to protect the surface while positioning vehicles. Expo committee will help vendors with heavy equipment or other display items, if possible, as needed. TPA reserves the right to make adjustments to the lay-out where necessary to accommodate unforeseen circumstances. TPA will make every effort to work with affected vendors as any adjustments are made.**

If you have a vehicle that is part of an outside display, and you need to drive it on and off your lot, **you must have the vehicle on your lot before 9:00 AM and the vehicle cannot leave your lot until after the show closes for the day.** No vehicles will be allowed to drive on and off your lot during show hours. **THERE WILL BE NO EXCEPTIONS TO THIS RULE.**

**TENT, TABLE AND CHAIR RENTAL**

See enclosed flyer for local rental companies. They also have a limited number of generators available if you need power and it isn't available on an outside lot. **No tables or chairs are included with the 40x50 Lot rental.**

**LOT AND BOOTH SET UP**

**Indoor booths-** Set up any time is Thursday, September 12<sup>th</sup> between 8:00 AM and 6:00 PM.

**Outdoor lots-** Heavy equipment must be on site Thursday, September 12<sup>th</sup> between 9:00 Am and 6:00 Pm

**THERE WILL BE NO SET UP AFTER 9:00 AM FRIDAY, SEPTEMBER 13<sup>th</sup>**

**FORK LIFT AND SKID-STEER**

Machines are available Thursday, September 12<sup>th</sup> from 8 AM to 6 PM on and from 1 PM – 4 PM on Saturday, September 16<sup>th</sup>. **Max payload is 8500 pounds.** If you need assistance outside of these hours, please call 218-722-5013 to make arrangements. **SEE SIGN UP SHEET AS WELL**

**Because these machines are donated for use during the show, they must be returned to the donors by Noon on Monday, September 16<sup>th</sup>.** We need to adhere to this time frame. As a result, please keep materials in need of a forklift/skid steer from arriving before Sept. 12<sup>th</sup> and picking up after Sept. 16<sup>th</sup>. Please indicate in advance if you will need forklift/skidsteer assistance.

**In the event you need a machine after that, here are some options in the Grand Rapids area for your use:**

**Herc-U-Lift Inc 218-326-0539**

Forklift only- no operator

**R & R Rental 218-999-7368**

Forklift only- no operator

**REGISTRATION**

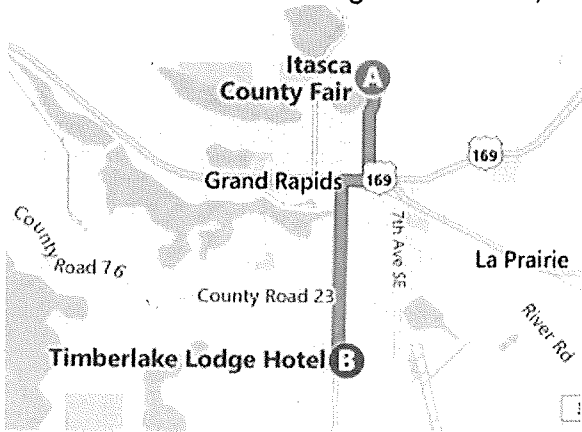
All exhibitors **are required to sign in** at TPA's Registration Desk before setting up booths and/or lots. Name Tags will be available at registration.

**Clean up**

Vendors who produce sawdust and other residue (such as sawmills, firewood processors, etc.): please do your best to keep your lots cleaned up **during the event**, to make your responsibility to clean up afterwards easier. One way of doing that would be to consolidate any residue/sawdust in one spot as best you can.

**PARKING:** September 13<sup>th</sup> and 14<sup>th</sup> – for safety reasons, no vehicles will be allowed in the Expo display areas during the times of the Expo is open. Vehicles that are part of the display must be in position before the grounds open to visitors at 9AM each morning.

**FRIDAY NIGHT Social with door prizes at Timberlake Lodge** - September 13<sup>th</sup> in the Oak Room. Social Hour will begin at 5:30 PM, and there will be a cash bar and Heavy hors d'oeuvres.



***Timberlake Lodge Location***

**10-SECOND PA ANNOUNCEMENTS**

See enclosed flyer for rates and other information. **\*\*Note Maximum # allowed.**

**HOTEL RESERVATIONS AND CAMPING INFORMATION**

Hotel rooms will be booked quickly, please make your reservation as soon as you can. Please refer to enclosed Hotel List for hotels in Grand Rapids.

**FOOD AND BEVERAGE GIVEAWAYS**

Vendors will be allowed to give away food and *non-alcoholic* beverages from their lots or booths.

**TIMBER BULLETIN ADVERTISEMENT**

The *Timber Bulletin* will dedicate the September/October issue to recap the North Star Expo. Please refer to the enclosed flyer regarding advertising prices. Ad copy must be sent to the TPA office by July 8<sup>th</sup> for July/August issue and September 2<sup>nd</sup> for the September/October issue (please refer to the enclosed rate sheet for details and pricing.)

**SHIPPING**

If shipping items to the North Star Expo, delivery address is:

ICAA  
1836 Fairgrounds Road  
Grand Rapids, Minnesota (MN) 55744  
218-326-6470

**FURTHER INFORMATION**

For further information, please contact the Minnesota Timber Producers Association office at (218) 722-5013.





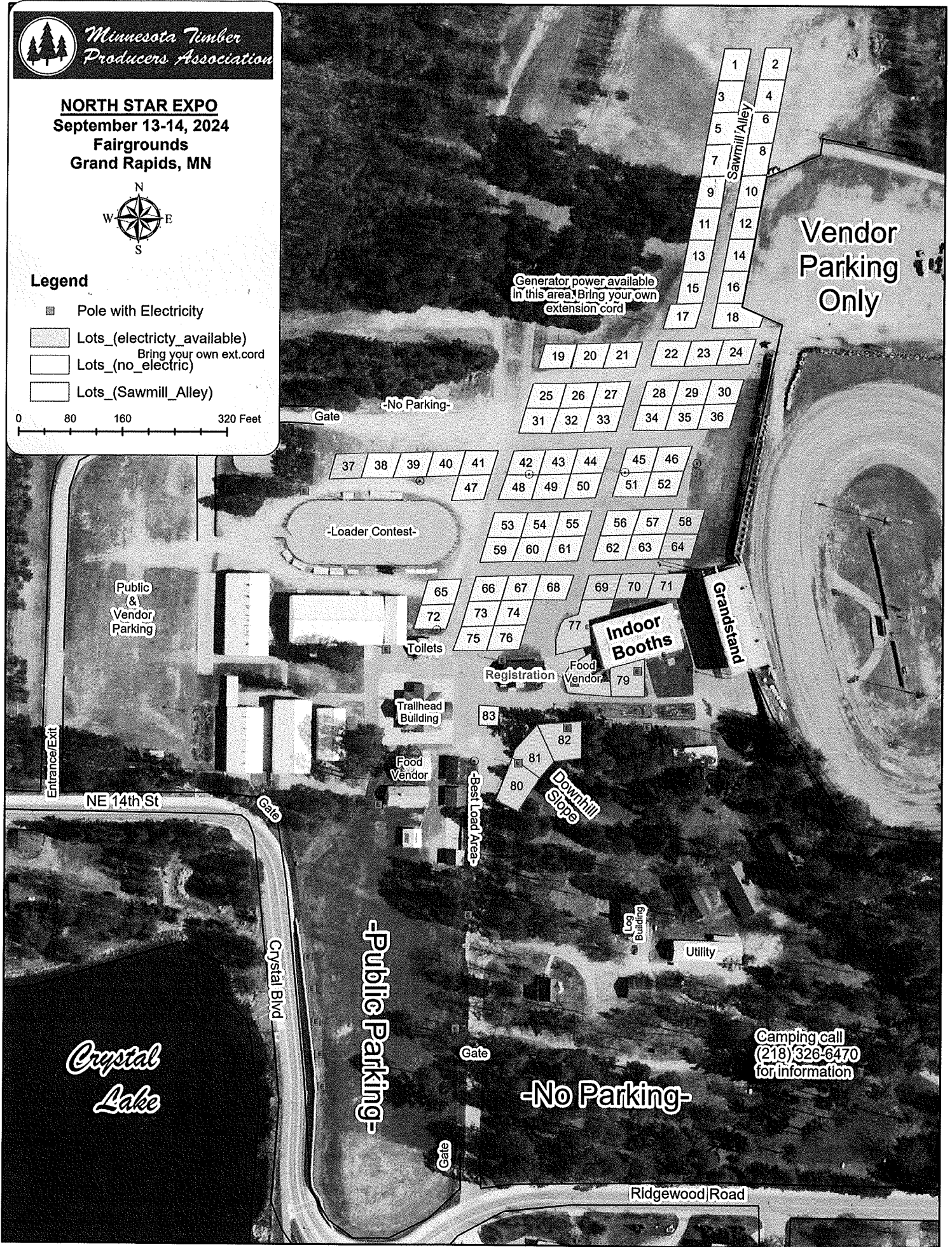
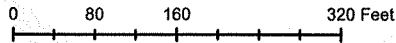
Minnesota Timber Producers Association

**NORTH STAR EXPO**  
September 13-14, 2024  
Fairgrounds  
Grand Rapids, MN



**Legend**

- Pole with Electricity
- ▭ Lots\_(electricity\_available)  
Bring your own ext.cord
- ▭ Lots\_(no\_electric)
- ▭ Lots\_(Sawmill\_Alley)



Vendor Parking Only

Generator power available in this area. Bring your own extension cord

-No Parking-

-Loader Contest-

Public & Vendor Parking

Indoor Booths

Grandstand

Downhill Slope

Public Parking-

-No Parking-

Camping call (218) 326-6470 for information

Crystal Lake

Ridgewood Road

NE 14th St

Crystal Blvd

Best Load Area

Trallhead Building

Food Vendor

Registration

Food Vendor

Log Building

Utility

Toilets

Entrance/Exit

Gate

Gate

Gate

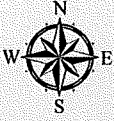
Gate

Sawmill Alley



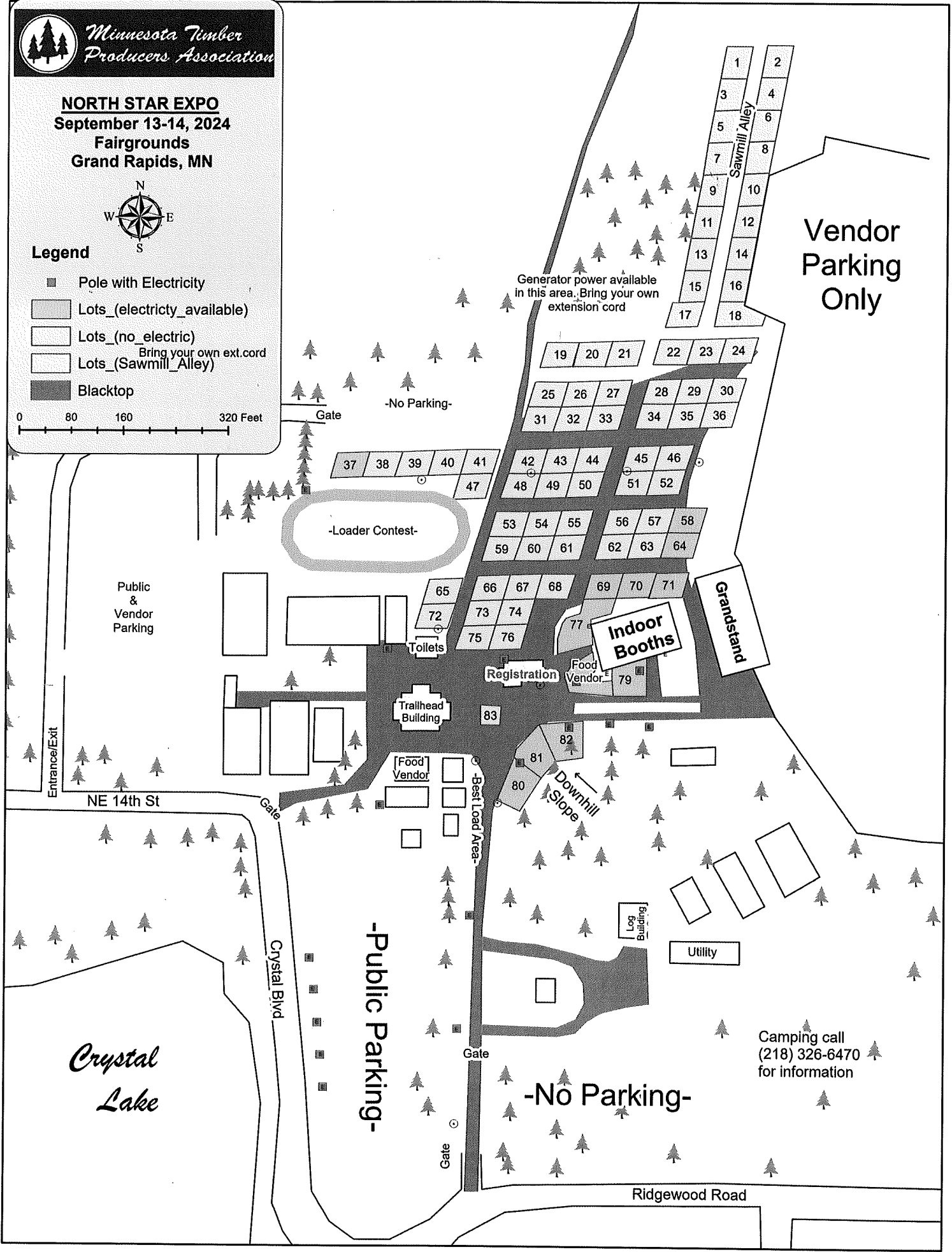
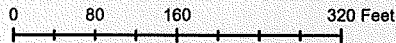
Minnesota Timber Producers Association

**NORTH STAR EXPO**  
September 13-14, 2024  
Fairgrounds  
Grand Rapids, MN



**Legend**

- Pole with Electricity
- ▨ Lots\_(electricity\_available)
- Lots\_(no\_electric)
- ▨ Lots\_(Sawmill\_Alley)  
Bring your own ext.cord
- Blacktop



70th Annual  
**NORTH★STAR**  
**EXPO**

2024

**SCHEDULE OF EVENTS**

**Friday, September 13<sup>th</sup>**

9:00 am – 5:00 pm	Equipment Displays Open
9:00 am – 3:00 pm	Future Forest Stewards
9:30 am	Display Contest Judging
10:00 am – 11:00 am	Loader Contest (sign up at site)
11:30 am – 12:30 pm	Celebrity/Media Loader Contest
12:30 pm – 3:00 pm	Loader Contest (sign up at site)
5:00 pm	Equipment displays close
5:30 pm	Cash Bar & Social Hour begins @Timberlake Lodge in the Oak Room With heavy Hors D'oeuvres & Door Prizes

**Saturday, September 14<sup>th</sup>**

7:00 am – 9:00 am	Free Pancake Breakfast (Sponsored by McCoy Construction & Forestry)
9:00 am – 1:00 pm	Equipment displays open
9:00 am – 11:00 am	Loader Contest (sign up at site)
11:00 am	Coloring contest winners judged and announced
12:00 pm	Winners announced for Loader, Master Loader, and Best Load contests
12:30 pm	Winners announced for Guess the Weight, Big Cookie, Vendor Drawing, Wood I.D. and Big Cookie contests
1:00 pm	Equipment displays close

**CONTESTS**

**Guess the Weight** - Guess the weight of a fully loaded truck, cash prize

**Wood Identification** - See how many tree species you can identify, cash prize

**Loader** - Test your skills against the clock, cash prize

**Masters Division Loader** - Loader contest for those 50 and over - sign up at site, cash prize

**Best Load** - Come and see the Best Loads of Wood on Display

**Big Cookie** - Enter to see if your wood cookie is the biggest of its species, cash prize

For additional information, contact:  
Minnesota Timber Producers Association  
324 W Superior St #903, Duluth, MN 55802  
218/722-5013

# Sample Insurance Certificate

ACORD CERTIFICATE OF LIABILITY INSURANCE				DATE (MM/DD/YY)	
<b>PRODUCER</b> Your Insurance Agent Name Address City State Zip		THIS CERTIFICATE IS ISSUED AS A MATTER OF INFORMATION ONLY AND CONFERS NO RIGHTS UPON THE CERTIFICATE HOLDER. THIS CERTIFICATE DOES NOT AMEND, EXTEND OR ALTER THE COVERAGE AFFORDED BY THE POLICIES BELOW.			
<b>INSURED</b> ✓ Company Name Address (business or home) City State Zip		COMPANIES AFFORDING COVERAGE			
		COMPANY A Your Insurance Company Name			
		COMPANY B			
		COMPANY C			
			COMPANY D		
<b>COVERAGES</b> THIS IS TO CERTIFY THAT THE POLICIES OF INSURANCE LISTED BELOW HAVE BEEN ISSUED TO THE INSURED NAMED ABOVE FOR THE POLICY PERIOD INDICATED, NOTWITHSTANDING ANY REQUIREMENT, TERM OR CONDITION OF ANY CONTRACT OR OTHER DOCUMENT WITH RESPECT TO WHICH THIS CERTIFICATE MAY BE ISSUED OR MAY PERTAIN. THE INSURANCE AFFORDED BY THE POLICIES DESCRIBED HEREIN IS SUBJECT TO ALL THE TERMS, EXCLUSIONS AND CONDITIONS OF SUCH POLICIES. LIMITS SHOWN MAY HAVE BEEN REDUCED BY PAID CLAIMS.					
CO LTR	TYPE OF INSURANCE	POLICY NUMBER	POLICY EFFECTIVE DATE (MM/DD/YY)	POLICY EXPIRATION DATE (MM/DD/YY)	LIMITS
A	<input checked="" type="checkbox"/> GENERAL LIABILITY ✓ <input checked="" type="checkbox"/> COMMERCIAL GENERAL LIABILITY <input type="checkbox"/> CLAIMS MADE <input checked="" type="checkbox"/> OCCUR ✓ <input type="checkbox"/> OWNER'S & CONTRACTOR'S PROT	Policy Number	✓	Policy dates must include set-up and tear-down dates.	GENERAL AGGREGATE ✓ \$ 2,000,000 PRODUCTS - COMP/OP AGG ✓ \$ 1,000,000 PERSONAL & ADV INJURY \$ EACH OCCURRENCE ✓ \$ 1,000,000 FIRE DAMAGE (Any one fire) \$ MED EXP (Any one person) \$
	AUTOMOBILE LIABILITY <input type="checkbox"/> ANY AUTO <input type="checkbox"/> ALL OWNED AUTOS <input type="checkbox"/> SCHEDULED AUTOS <input type="checkbox"/> HIRED AUTOS <input type="checkbox"/> NON-OWNED AUTOS				COMBINED SINGLE LIMIT \$ BODILY INJURY (Per person) \$ BODILY INJURY (Per accident) \$ PROPERTY DAMAGE \$
	GARAGE LIABILITY <input type="checkbox"/> ANY AUTO				AUTO ONLY - EA ACCIDENT \$ OTHER THAN AUTO ONLY: EACH ACCIDENT \$ AGGREGATE \$
	EXCESS LIABILITY <input type="checkbox"/> UMBRELLA FORM <input type="checkbox"/> OTHER THAN UMBRELLA FORM				EACH OCCURRENCE \$ AGGREGATE \$
	WORKERS COMPENSATION AND EMPLOYERS' LIABILITY THE PROPRIETOR/PARTNERS/EXECUTIVE OFFICERS ARE <input type="checkbox"/> INCL <input type="checkbox"/> EXCL				WC STATUTORY LIMITS \$ EL EACH ACCIDENT \$ EL DISEASE - POLICY LIMIT \$ EL DISEASE - EA EMPLOYEE \$
	OTHER				
DESCRIPTION OF OPERATIONS/LOCATIONS/VEHICLES/SPECIAL ITEMS ✓ It must state, the Minnesota Timber Producers Association is named as an additional insured.					
<b>CERTIFICATE HOLDER</b> MN Timber Producers Association 903 Medical Arts Bldg. 324 W. Superior St. Duluth MN 55802			<b>CANCELLATION</b> SHOULD ANY OF THE ABOVE DESCRIBED POLICIES BE CANCELLED BEFORE THE EXPIRATION DATE THEREOF, THE ISSUING COMPANY WILL ENDEAVOR TO MAIL ✓ 30 DAYS WRITTEN NOTICE TO THE CERTIFICATE HOLDER NAMED TO THE LEFT. BUT FAILURE TO MAIL SUCH NOTICE SHALL IMPOSE NO OBLIGATION OR LIABILITY OF ANY KIND UPON THE COMPANY, ITS AGENTS OR REPRESENTATIVES.		
			Your Insurance Agent's Signature		
ACORD CORPORATION 198					

EXAMPLE



## **FORK LIFT & SKID-STEER**

Fork lift and skid steer will be available 8 AM to 6 PM - Thursday, September 12th, and from 1 PM – 4 PM on Saturday, September 14th. **Max payload is 8500 pounds.** If you need assistance **outside of these hours**, please call 218-722-5013 to make arrangements.

*The equipment is donated from other companies and they need to have them back shortly after the expo is completed. We need to comply with their time and cost.*

Please keep logistics from arriving before Sept. 14<sup>th</sup> and picking up after Sept. 18<sup>th</sup>

Please indicate if you will be using this assistance with us:

Thursday, Sept. 12th 8 AM- 6 PM \_\_\_\_\_

Saturday, Sept. 14th 1 PM- 4 PM \_\_\_\_\_

Monday, Sept. 16th Mornings only \_\_\_\_\_

Name of Company:

Contact person:

Contact phone number:

Email contact:

Which machine you will need:

Fork Lift \_\_\_\_\_

Skid steer \_\_\_\_\_

***Because these machines are donated for use during the show, they must be returned to the donors at Noon on Monday, September 16<sup>th</sup>. In the event you need a machine after that, here are some options in the Grand Rapids area for your use:***

**Herc-U-Lift Inc 218-326-0539**

Forklift only- no operator

**R & R Rental 218-999-7368**

Forklift only- no operator

# Timber Bulletin – The Voice of the Timber Industry

## North Star Expo Advertising Package

### Two-Time Special Rate

**July/August and September/October**  
**(Due 7/8/2024) (Due 9/2/2024)**

Size	Measurements			2 Time Rate
1 Page	7 1/16 x 10			\$286 ea issue
1/2 Page	3 7/16 x 9 13/16	7 1/6 x 4 13/16	4 5/8 x 7 5/16	\$165 ea issue
1/4 Page	3 7/16 x 4 13/16	4 11/16 x 3 7/16	2 1/4 x 4 13/16	\$105 ea issue
Business Card size				\$64 ea issue

..... \$41 per extra color

..... \$137 four color process

**Mechanical Requirements:** Page is three columns, each 2-1/4" wide. Binding is saddle stitched. Printed offset on 70 lb. stock. No charge for normal composition set by publisher. Forms of acceptable media: floppy disk; CD; Jazz; Zip. Bleed - 1/8 inch, trim 8 1/4 x 11, line screen 150, live area 7 1/16 x 10. Extra charges may be made at publisher's costs for screening halftones from glossy prints, special artwork and stripping, or unusually complicated composition. Estimates provided on request from the printing company.

**THESE SPECIAL RATES APPLY TO NEW ADVERTISERS ONLY.**

*Regular advertisers will be billed as normal.*

If you have any questions, please call 218/722-5013.

Email ad to [Expo@timberproducers.com](mailto:Expo@timberproducers.com)

# ★ NORTH STAR EXPO ★

## 10-SECOND PA ANNOUNCEMENTS

ATTRACT *EVEN MORE* ATTENDEES TO YOUR EXHIBIT AREA

We will again be making PA announcements this year. The Announcer will be making 10-second announcements throughout the day. This is your chance to highlight products that will be on display in your booth or lot, to publicize any specials you are having, to announce special company representatives, advertise special demonstrations, etc.

*Example:* "Stop by the ABC Chainsaw Company lot 15 in just a few minutes! See what we have on display for 25 percent off – ask our representatives to give you a demonstration. Hurry over - they're starting now!"

1 - 5 10-second announcements for \$10.00 each

6 - 10 10-second announcements for \$8.00 each

11 or more announcements are \$6.00 each

**\*\* MAXIMUM of 24 on Friday and 12 on Saturday \*\***

The announcements can be made on Friday-only, Saturday-only, OR both days.

There is space on the Reservation Form to indicate how many announcements you want and on which or both days.

Copy information must be faxed to (218)722-2065; e-mailed to [expo@timberproducers.com](mailto:expo@timberproducers.com) or mailed to the TPA office by close of business on **Friday, August 16th** If you have any questions, please call the TPA office. **TPA WILL NOT BE RESPONSIBLE** for announcements if information is not received.

Below is a sample format for your announcements:

#	Time	Announcement Friday	#	Time	Announcement Saturday
1	9:15 am	Stop by Lot Number ?? for a free cup of coffee and a demonstration of our new product. <b>EXAMPLE</b>	1	10 am	Come to Booth # ?? and register for a pressure washer. The drawing will be held at noon. <b>EXAMPLE</b>
2 and 5	11:30 am and 3:30 pm	Stop by Lot Number ?? to meet XYZ Company Rep who will answer any questions you may have. <b>EXAMPLE</b>	2	Noon	The winner of the pressure washer in Booth # ?? is Mr. From blank, MN. <b>EXAMPLE</b>
3 and 4	1:00 pm & 5:00 pm	Come see the latest equipment in lot number ?. Company reps are available to answer your questions. <b>EXAMPLE</b>			

# 70<sup>th</sup> Annual North Star Expo

Sept 12-14, 2024

## Hotel Contact Information

<https://visitgrandrapids.com/travel-packages-and-groups/>

### **TimberLake Lodge**

144 SE 17th St, Grand Rapids, MN 55744

218-326-2600

Website: [www.timberlakelodgehotel.com](http://www.timberlakelodgehotel.com)

Additional Information: Breakfast is included with the rooms.

### **IM Hotel**

1702 S Pokegama Ave, Grand Rapids, MN 55744 218-327-1108

Website: <https://www.imhoteltimberlake.com/>

### **AmericInn**

1812 S Pokegama Ave, Grand Rapids, MN 55744

218-212-1842

Website: <https://www.wyndhamhotels.com/americinn/grand-rapids-minnesota>

### **Hotel Rapids**

680 U.S. Rte 2, Grand Rapids, MN 55744

218-326-3457

website [www.hotelrapids.com](http://www.hotelrapids.com)

### **Country Inn & Suites**

2601 US-169, Grand Rapids, MN 55744

218-327-4960

Website: <https://www.radissonhotelsamericas.com/en-us/hotels/country-inn-grand-rapids-mn>

### **Best Western Plus**

2309 SW 1st Ave, Grand Rapids, MN 55744

218-301-0345

Website: [https://www.bestwestern.com/en\\_US/book/hotel-rooms.24151.html](https://www.bestwestern.com/en_US/book/hotel-rooms.24151.html)



Price Summary for 2024 North Star Expo  
Grand Rapids, MN  
September 2024

<u>POLE TENTS</u>	<u>PRICE</u>	<u>FRAME TENTS</u>	<u>PRICE</u>
15X15	\$192.00	10X10	\$198.00
		15X15	\$297.00
20X20	\$264.00	15X30	\$509.00
20X30	\$396.00	15X45	\$726.00
20X40	\$528.00	15X60	\$891.00
30X30	\$594.00	20X20	\$396.00
30X40	\$654.00	20X30	\$594.00
30X45	\$981.00	20X40	\$726.00
30X60	\$1,230.00	20X50	\$858.00
30X75	\$1,634.00	20X60	\$990.00
30X90	\$1,961.00	30X30	\$951.00
40X40	\$1,162.00	30X40	\$1,268.00
40X60	\$1,743.00	30X45	\$1,426.00

**-Other sizes of tents available. Please contact us for pricing.**

-Siding is available in Solid and Mesh styles. The rental cost for siding is \$1.85 per linear foot. (Example 30ft=\$56.00) French window siding is available @ \$2.30 per linear foot. (Example 30ft=\$69.00)

-Tables are available in 6ft and 8ft lengths or 5ft rounds. The rental cost is \$13.00 per 6ft table, \$14.00 per 8ft table and \$16.00 per 5ft round table. Other sizes and styles of tables are available upon request.

-Bar top table extensions (for a two-tier table) are available for an additional \$8.50 for the 6ft tables and \$9.50 for the 8ft tables.

-Chairs are available at the rental rate of \$2.00 each for brown or \$2.70 each for white.

-Table linens are \$18.00 each for the banquet tables and \$19.00 each for the round tables. Linen skirts are \$32.50 per 13ft skirt. All linen is available in over 65 colors.

-Plastic table covers are available at the rate of \$6.75 each (elastic stay put cover) or \$26.00 per 100ft table roll.

-Prices include set up and removal effective Thursday through Saturday. All reservations require a 50% deposit and the remainder due 14 days prior to delivery.

-Frame tents unable to be staked into the ground will require weights. Additional charges will be added at the time of order placement. Weights are \$9.50 each.

**\*Transportation is included in these rates.**

\*For reservations contact Tracy at (218) 245-1387 or (888)245-1387



# Thank you!

for your support of the North Star Expo,  
and of Minnesota's logging community

## **A Note about the close of the show on Saturday:**

In 2022, we moved our end time to **1PM on Saturday**, one hour earlier than previous years. The reason is that many vendors began packing up before our previous end time of 2PM. We understand your desire to get back to your homes and families, so we moved up our official end time to reflect that, and to let attendees know when the show will actually be closing.

**As a result, we ask that you please remain in place and fully "up and running" until the completion of the event at 1PM,** so that those attendees attempting to catch the end of the show can see your display. Your cooperation in this is much appreciated.

Thank you!



*Minnesota  
Timber Producers Association*