

THE VOICE OF THE TIMBER INDUSTRY

# TIMBER BULLETIN

DULUTH, MINNESOTA

NOVEMBER/DECEMBER 2017

VOLUME 72

*Merry  
Christmas!*



# Rice Blacksmith Saw & Machine &

# SIMONDS®

are proud to feature



## THE FUTURE 2000™

U.S. Patent # 4,765,217

For an efficient, economical and dependable slashing operation

Why settle for anything but the BEST

GET ON BOARD  
with  
SIMONDS

and join with the hundreds of mills using this proven advanced design for lower production costs

Simonds Future 2000™ Cut-off Tooth offers you increased production, reduced power consumption, reduced maintenance and inventory costs!

Simonds Future 2000™ is currently in use at hundreds of installations

- Self aligning tips can be brazed onto teeth without removing teeth from saw
- Center tracking reduces crack causing vibration
- Eliminates need for left and right hand teeth
- Available in Jumbo and 2 1/4 Cut-off style

Simonds Industries Inc.  
P.O. Box 500  
Invervale Road  
Fitchburg, MA 01426  
Tel: (508) 343-5721  
Fax: (508) 342-1809  
007 09 87A15  
Tel: 1-800-343-1816  
Fax: 1-800-343-6354

SIMONDS Simonds Industries Inc. • Michigan Knife • Weston-Philbrick  
Quality Endures • Simonds Since 1832

## Rice Blacksmith Saw & Machine &

# SIMONDS®

are proud to feature

### Michigan Knife KNIVES

A complete line of knife products  
Popular sizes in stock  
Ready for immediate delivery

# SIMONDS®

## Future 2000™

U.S. Patent No. 4,765,217

For an efficient, economical  
and dependable slashing  
operation

SAWS • TEETH • TIPS *INSTOCK!*  
Why settle for anything  
but the BEST?

Offering complete professional saw repair service—call now!

## Rice Blacksmith Saw & Machine

Main Street, Rice, MN 56367 • Phone 612-393-2169 • Fax 612-393-2847  
Contact: Jim, Joe or Al Voigt

## RED STREAK

Make Simonds your source for the highest quality and best value in cutting tools. Choose from the industry's broadest selection of narrow kerf bandsaw blades for all applications and types of equipment.



Simonds manufactures high quality wood cutting bandsaws for every application.

Resaws  
Multi-Heads  
Portable Sawmills  
Pallet Mills  
Band Edgers  
Plywood Trimmers  
Venor Saws  
Line Bars  
Headrigs

Simonds Industries Inc.  
Fitchburg, MA USA



Since 1832 . . . Simonds Supplies,

THE RIGHT BLADE FOR THE JOB!

Offering complete professional saw repair service—call now!

## Rice Blacksmith Saw & Machine

Main Street, Rice, MN 56367 • Phone 320-393-2169 • Fax 320-393-2164  
Contact: Jim or Al Voigt



# TIMBER BULLETIN

Volume 72  
November/December 2017  
Duluth, Minnesota

## IN THIS ISSUE

Getting the Most out of the Wood .....	<b>8</b>
Draft Sustainable Timber Harvest Analysis Report Available.....	<b>14</b>
Blandin's #5 Paper Machine Shuts Down ...	<b>16</b>
Dobbs Logging.....	<b>18</b>
TPA Board Meets-Tours Norbord.....	<b>20</b>
Northern Capital/TPA Fire Extinguisher Program ..	<b>21</b>
USFS Officials Meet with Industry Leaders..	<b>22</b>
Timber Talk.....	<b>24</b>
On the Markets .....	<b>26</b>
Loggers of the Past .....	<b>28</b>
Classifieds.....	<b>30</b>
Advertisers Index.....	<b>30</b>



## TIMBER PRODUCERS ASSOCIATION

**President**  
DAVE BERTHIAUME

**Past President**  
SCOTT PITTACK

**1st Vice President**  
KURT BENSON

**2nd Vice President**  
ROD ENBERG

**Secretary/Treasurer**  
COREY LOVDAHL

**Editor-in-Chief**  
WAYNE E. BRANDT

**Graphic Design, Editorial and Mechanical Production**  
STEWART-TAYLOR PRINTING

## ON THE COVER

Cover photo by Lori Dobbs of Dobbs Logging in Littlefork. To see more of Lori's work, visit [www.lori-dobbs.pixels.com](http://www.lori-dobbs.pixels.com).

The Timber Bulletin is published six times annually, in February, April, June, August, October and December by the Minnesota Timber Producers Association, located at 903 Medical Arts Bldg., 324 W. Superior St., Duluth, Minn. Minnesota Timber Producers Association members receive the Timber Bulletin at an annual subscription rate of \$25 which is included in their membership dues. Periodicals postage paid in Duluth, Minnesota. Advertising rates and data on request. The views expressed in the Timber Bulletin do not necessarily reflect the views or opinions of the Minnesota Timber Producers Association.

**Postmaster: Please send address corrections to TIMBER BULLETIN, Minnesota Timber Producers Association, 903 Medical Arts Bldg., 324 W. Superior St., Duluth, Minnesota 55802, Phone 218-722-5013.**  
Issn: 10973532 – USPS: 016208

No articles may be reprinted without written permission from the Minnesota Timber Producers Association.



Minnesota  
Timber Producers  
Association



**A**s I write this update, the cold weather has finally arrived. This logger is happy to see hard ground after a summer of saturated soil. Let's hope for a winter of productive logging.

The Association's board of directors recently held its meeting in Bemidji. After the meeting, we toured the Norbord plant. It was a very informative tour. We would like to thank Norbord for their

**President's Column** gracious hospitality. On an informative note, work with the



state concerning the million cord sustainable harvest continues. Let's hope wisdom prevails.

As always, let's continue to be safe and spend time with family. Remember, the trees will always be there.

*David Berthiaume*

**Executive Committee**

Dave Berthiaume: 218-380-9783  
 Kurt Benson: 218-239-1001  
 Rod Enberg: 218-352-6175  
 Corey Lovdahl: 218-244-4580  
 Scott Pittack: 218-259-8148

**TPA Staff**

Ray Higgins: 218-722-5013  
 Wayne Brandt: 218-722-5013



*Your hopes. Your dreams.*  
**WE'RE READY.**

**We're Compeer Financial.™**

Profitability doesn't always come easy when you're trying to harvest timber, sustain logging resources, manage the environment and produce an excellent wood product.

That's why we offer operating loans, leases and a variety of equipment loans to help you with your forestry financing as you plan for growth. From dozers to processors, we have the financing options and Timber expertise you need to help you move forward.

**COMPEER.COM/TIMBER**

**Ben Mussehl**  
 Financial Services Officer - Timber Specialist  
 (715) 688-9080  
 Ben.Mussehl@Compeer.com

**Tammy Moon**  
 Associate Timber Lending Specialist  
 (320) 406-4692  
 Tammy.Moon@Compeer.com



**COMPEER.COM | (844) 426-6733**

Compeer Financial, ACA is an Equal Credit Opportunity Lender and Equal Opportunity Provider. ©2017

**TIMBER BULLETIN Subscription Order**

Please ENTER my subscription to the Minnesota Timber Bulletin (six issues per year). Payment is enclosed for:

1 year \$25     2 years \$40     3 years \$55

Please type or print clearly.

NAME \_\_\_\_\_

ADDRESS \_\_\_\_\_

CITY \_\_\_\_\_ STATE \_\_\_\_\_ ZIP \_\_\_\_\_

COMPANY/ORGANIZATION \_\_\_\_\_

Please send my GIFT SUBSCRIPTION to the Minnesota Timber Bulletin (six issues per year) to be sent to the name below. Payment is enclosed for:

1 year \$20     2 years \$33     3 years \$45

Please type or print clearly.

NAME \_\_\_\_\_

ADDRESS \_\_\_\_\_

CITY \_\_\_\_\_ STATE \_\_\_\_\_ ZIP \_\_\_\_\_

**Make checks payable to:**  
 TPA Services, Inc., 903 Medical Arts Bldg., 324 W. Superior St., Duluth, MN 55802  
 Note: Existing subscriptions will continue at their current rate until they expire.





# PROFITABLE LOGGING. SUSTAINABLE FORESTRY.

Ziegler CAT offers a complete line of forestry equipment to meet your application needs — from core machines that help with road building, millyard, and reforestation, to purpose-built machines that harvest, extract, and load. We have what you need to get the job done, plus the service to back it up.

- **On-site service**
- **Convenient parts ordering**
- **Quality equipment for every job**
- **Locally owned and operated locations**

**BEMIDJI**

5426 Highway 71 North  
Bemidji, MN 56601  
866.634.9983

**BRAINERD**

3311 Liberty Lane  
Brainerd, MN 56401  
877.829.9850

**BUHL**

10081 East Highway 169  
Buhl, MN 55713  
800.446.9795

**DULUTH**

210 Garfield Avenue  
Duluth, MN 55802  
800.421.3831

**ZIEGLER CAT**

[www.zieglercat.com](http://www.zieglercat.com)

**T**he announcement by UPM Blandin that they are permanently shutting down Paper Machine #5 shouldn't be a surprise to anyone. Numerous reports commissioned by the current and previous Governors and their administrations have shown the uncompetitive position that forest products manufacturers in Minnesota face – particularly paper manufacturers.

Stumpage prices in Minnesota continue to be above those of our competitors.

**Executive Vice President's Column**



Why is this the case? It's pretty simple: supply and demand.

The MN DNR is in the final stages of completing an analysis of their sustainable timber harvest level. This should

show that the DNR can increase management on their lands through timber harvest beyond their current level of 900,000 cords annually.

But, the DNR is but one piece of the stumpage pie. We are hopeful that increased state and private efforts on private lands will result in more wood on the market. Again, we are hopeful of this but it hasn't happened in a significant way yet.

The counties and the USFS need to do more too.

On the energy front, we helped pass legislation two and half years ago that was designed to reduce the amount of subsidy that forest products mills and taconite mines provide to residential customers and thereby reduce electrical costs for these vital economic sectors.

While this law has been on the books it has not been implemented. The Public Utilities Commission continues to do everything it can to prevent these reduced electrical rates from happening.

To put this in context, wood and energy comprise approximately fifty percent of the cost of manufacturing

a ton of paper. And, demand for printing and writing papers, which is what we make in Minnesota, has been on a downward trend for a number of years with higher cost machines and mills being closed.

My heart goes out to our members whose contracts will be curtailed and to the 150 people and their families who will be losing their jobs in the mill.

This didn't need to happen.



I was in Washington, D.C., last month with Howard Hedstrom for meetings of the Federal Forest Resources Coalition. Our group met with new USFS Chief Tony Tooke and Deputy Chief for the National Forest System Chris French. Both of these longtime USFS leaders are a breath of fresh air.

Their focus is on getting work done on our National Forests. They have a plan for doing this. They have interim and accountability steps to make the plan happen. They intend to change how the USFS does environmental analysis

**WE'RE RAISING THE BAR TO HIGHER STANDARDS.**

- **Patented 15 Tooth Sprocket**  
Holds the chain straighter and reduces it's RPM, reducing vibration, friction, and wear. Yielding less down time.
- **Internal oil feeder grooves**  
(Patent Pending) force the lubrication directly to the bearings, keeping them cool which results in longer life.
- **Flex Memory**  
A result of a unique blending of Titanium steel, provides for a bar that returns to form when bend pressure is applied, resulting in less down time for straightening repairs.

**NOTHING COMPARES TO THE LEGEND.**

Dealer inquiries invited

Marketed in the USA exclusively by

**WALLINGFORD'S INC.**

[www.wallingfords.com](http://www.wallingfords.com) | 800.323.3708 | [info@wallingfords.com](mailto:info@wallingfords.com)



(NEPA) and how they get work done on the ground.

I came away from these meetings more optimistic about the USFS than I have been in many years. I hope that my optimism proves to be well-founded.



There has been a lot of bad news coming from the State Capitol and the legislature. Two legislators resigned after sexual harassment charges were leveled at them. They needed to resign. There is no excuse for sexual harassment.

As TPA's chief lobbyist at the Capitol I know that the word 'lobbyist' is not always held in the highest of esteem. We also know that not all elected officials are held in the highest of esteem.

One of the troubling aspects of this scandal is that the stench of the actions of a few at the Capitol gets on all of us whose jobs entail working there and around State Government.

In my thirty plus years in the political and public policy arenas I can say that nearly all of the people I have worked with are ethical, responsible people, who advocate for what they believe in, and do it in a professional way.

The State Capitol is not a cesspool, but it does have some bad apples.



I guess I missed the memo when it was announced that a warming climate was the cause of declining moose populations. Oops, there wasn't any such memo.

Results of recent studies led by the DNR show that the primary cause of moose deaths were wolf predation (35%), brain parasites spread by deer (30%), bacterial infections (21%) unknown (10%) and calving, hunting or accidents (4%).

So those are the causes of moose deaths. It still doesn't get at why moose populations have shrunk in recent years.

Could it be prime moose habitat? It has been reported that moose populations are up significantly in the areas that burned after the BWCAW blowdown of 1999. Hmmm. So moose like young forest habitats in large blocks. I think we have known that for a long time.

Maybe it's time for the DNR Division of Wildlife to start advocating for these types of habitats instead of arguing against them.



As another year draws to a close I want to thank you as members of TPA for the chance to serve in this very important role. I have the greatest respect for our members and am deeply grateful for the continued opportunity to be your advocate. Thank you.

I wish all of you a safe and happy holiday season.

## Hedstrom Lumber Co., Inc.

1504 Gunflint Trail  
Grand Marais, Minnesota



### BUYING LOGS:

White, Red and Jack Pine,  
Spruce, Balsam, Aspen  
and Birch

### *Deliveries accepted at:*

Mill Site  
Grand Marais, Minn.  
FutureWood  
South Range, Wis.  
Kirscher Transport Yard  
Virginia, Minn.

*For specifications and a contract call:*

**MN/WI Area - Doug Magee**  
218-349-9241

**Iron Range Area - Jeff Elliott**  
218-750-2700

**Canada - Jack Erickson**  
807-627-8826

Visit our website:  
[www.hedstromlumber.com](http://www.hedstromlumber.com)

## Member Feature...



Hooker Logging (L-R): Dustin Edelman, James Hooker, Rod Hooker, Bryan Hooker, Kurt DeMaris, and Brian Lafriniere

# Getting the Most out of the Wood

**For Rod, Bryan, and James Hooker of Hooker Logging, making the most of the species on a timber sale helps with profitability, and with keeping forests healthy.**

by Ray Higgins

**T**he project presented a unique opportunity for Rod Hooker and sons James and Bryan at Hooker Logging.

The company is working on a right-of-way clearing, which the

Hookers do from time to time. What's unique about this nine-mile-long harvest is that it runs right in front of the land where Rod grew up, and where James and his family now live, in Lake Alice Township in

Hubbard County, about a mile from Itasca State Park and the headwaters of the Mississippi River.

"I worked on acquiring this job for close to a year," Rod says. "I learned that it was coming up for





James Hooker operates Serco 300 loader/slasher. The red color of the cab was selected by Rod's 3-year-old grandson—the first cab Serco has painted red.

bids, got a hold of the company, I said I want this job. We have the experience, and we've done this stuff before. We have the crew, and we have the equipment."

The site contains mainly aspen and red pine, with smaller volumes of jack pine, spruce, and balsam. Plus, because it's alongside the road, there's a large amount of mulching to be done. That means production isn't as high as the Hookers are used to. The good news is, they're getting paid for clearing the right-of-way, plus they're marketing the timber as effectively as possible.

"It's not a fast job," Rod says. "With all the mulching we have to do, working along the road right-of-way, utilizing the material as best we can, getting the most out of it, it takes a little more time, but it's well worth it. We're sorting both pine logs and pine bolts, maximizing our time to by getting the highest value out of each piece of wood. It's a matter of getting the most out of everything."

Getting the most out of the wood is something Rod Hooker's been striving to do for more than forty years as a logger.

Hooker graduated from nearby Park Rapids High in 1976. Instead of heading off to college, he went to work for local logger Harlan Bratlien.

"I actually wanted to farm," Hooker says. "Harlan told me there was no money in farming. I went to work for him that winter. The next fall I started logging with an Allis Chalmers WD tractor with a dray and a 621 Jonsered chainsaw, and I've been at it 40 years later."

It's not that Hooker's dad was a logger. He worked 115 miles away at the National Steel Pellet mine in Keewatin, staying in a small apartment during the week, and returning to Lake Alice on the weekends. It was a difficult lifestyle for everybody.

"When I got married," Hooker says, "I didn't want that for my family."

"A lot of people get down on logging, but I'll tell you the truth, I think everybody ought to thank God and bend their knees that they're loggers, because we get to spend time with our families. We get to sleep in our own bed every night."

Rod and Laurie have two sons (Bryan and James) and two daughters (Kayela and Kristen). As the boys were coming of age and graduating from Park Rapids High, they both prepared to join the family business.

"I told the boys they had a choice," Rod says. "They could work with me for a year, and if it worked out, they were welcome to stay. If they didn't like it, they had the option to leave."

A decade or so later, James (31) and Bryan (30) are still with the company, and have joined Rod as co-owners of Hooker Logging.

"They've never had a bad word between them," Rod says. "I'm very proud of that. I'm not saying they don't disagree at times. But they'll walk away. I couldn't have asked for two finer sons."

James runs the Serco 300 loader/slasher for Hooker Logging, while Bryan operates the John Deere 200LC delimeter with a 2000B Limit. They're joined on the woods crew by Kurt DeMaris, who runs the Tigercat 720 feller buncher, and Brian Lafreniere—Rod's brother-in-law—operates the John Deere





Bryan Hooker and Kurt DeMaris operate Case and Cat skid steers to mulch slash and stumps on the site. The Hookers say the skid steers are useful for landowners who like their pastures or fence lines brushed out, for folks with hiking or horse trails, or for deer hunters who like their shooting lanes cleared.

skidder. Plus, Gary Hill and Dustin Edelman drive truck.

But everyone is versatile. On this day for example, as they work to finish this six-week-long right-of-way clearing, Hill is in a skidder and DeMaris and son Bryan are

operating skid-steers with mulching heads to grind up the slash and the stumps in the right-of-way so the power line crews can drive through in their pick-ups.

In addition, Lafreniere is hand-falling trees in a wetland area where

the trees have to come down so they don't eventually grow into the power line that's coming, but where the feller buncher would be too heavy.

"We're not allowed to go in with anything that will leave tracks



Gary Hill drives a John Deere 748L skidder, purchased earlier this year. The company also owns a Tigercat 620 skidder. Hill normally hauls timber for Hooker Logging.





**Dustin Edelman hauls harvest red pine to the mill. The Sta-Lite crib trailer was purchased earlier this year.**

or rut,” Hooker says. The only thing we can do is walk in there. We have to fall them and leave them. Fortunately, most of it is not merchantable.”

“I have a very good crew,” he says. “They’re very professional. We all work well together, they

know how to take care of their business. Our crew’s just a solid bunch of guys that are good to work with. Enough can’t be said about our crew. I have the deepest respect for all of them.”

A key trait of all of the Hookers’ crew members is they’re excellent

stewards of the land, and of the logging equipment.

“They take care of the machines,” Hooker says. “We don’t have cowboys here. We don’t put up with it. It’s because of them that we have the equipment we do.”

In fact, the Hookers have been



**Brian Lafriniere hand falls timber along the roadway, where the ground can’t support logging machines.**





White pine harvested from the site. The log on the left measures 36 inches at the base and is headed for Blueberry Log and Timber south of Park Rapids.

able to invest in new equipment in recent months. They took delivery on the Serco slasher/loader in October. The John Deere skidder was purchased last December. They've also purchased a new crib trailer this year.

"As we have invested in new equipment, our gross income has gone up with it," Hooker says. "To those that are wondering about buying new equipment, I suggest do it. Because if you have downtime, if you lost two days in a month, you've already paid for the new machine. You have to justify it, no doubt. On the other hand, your downtime, your extra production, it more than covers the payments."

Most importantly to Rod Hooker, however, is his return to health. Two years ago, he was diagnosed with renal carcinoma—a form of kidney cancer—and had half of his left kidney removed. Later in 2015 he underwent a quintuple heart bypass. That resulted in a total of three staph infections, including one earlier this year. All told, Hooker underwent five surgeries in two years.

"The Lord will never put you through more than you can stand. I think he's testing me," Hooker chuckles. "The boys ran the business while I was away, and it didn't suffer at all. In fact, we doubled and tripled the amount of wood we produced."

Hooker says he's equally proud of his daughters—Kayela is a pharmacy technician in Denver, and Kristen lives nearby in Becida and is finishing school in Bemidji to become a registered nurse. Rod's wife, Laurie, is also an integral part of the business, running the company's financial affairs.

"I don't know where I'd be without her," Rod says. "She's very good at making sure I get the bills paid, and keep my numbers straight."

The wood from the right-of-way clearing job has been going to a variety of markets: Hooker's aspen primarily goes to Sappi, PCA, and Norbord. The pine pulp will go to Norbord, with the Norway logs and bolts headed to Potlatch in Bemidji, or the nearby Two Inlets Mill. Some of the bigger pine—including

white pine—will be hauled to Blueberry Log and Timber south of Park Rapids, where pilings and big beams for the interiors of log cabins are made. Other species like spruce and balsam will be hauled to Duluth's Verso mill.

"We work well with all of those companies, and we appreciate doing business with them," Hooker says. "They've been very good to us."

Once the crew finishes here, the Hookers will head to other jobs, to haul some yarded oak at one site, slash some spruce at another, and start an aspen harvest at a third. There's also a fair amount of spruce and balsam to cut this winter, just the way Rod, Bryan, and James like it.

"We have to thank God that we get to be loggers," Rod says, "because we're a very special group. It takes special men to do what we do. I know a lot of people get down on logging. They don't want their sons in it. I'm fortunate enough that that's what both of my boys want."

"I get to work with my two sons every day. How much better can a man have it?"



# HAN FAB

**SLASHERS AND CARRIERS  
ENGINEERED TO SUPPORT  
ALL MANUFACTURERS**

**Custom Manufacturing  
Hydraulic Repair  
Full Machine Shop**

Hancock Fabrication Inc.  
9138 Hwy 22  
Angora, MN 55703  
(218) 666-5630  
Hanfabslashers.com



**PROUDLY SERVING THE TIMBER INDUSTRY SINCE 1980**

## Nelson Wood Shims

500 N.W. 3rd Street • P.O. Box 395 • Cohasset, MN 55721 • (218) 328-6203 • Fax (218) 328-6205

### **Nelson Wood Shims Is Seeking Basswood Logs!**

Nelson Wood Shims has opened a sawmill  
for their ever-growing sales and is in  
need of **BASSWOOD LOGS!!**

#### **Basswood ONLY**

**Length:** must be 100"

**Diameter:** 8 inch minimum

**Limbs:** well trimmed, flush with bole

**No Bells or Crotches**

**Crook:** No more than 1" sweep in 100" log

**Minimal Rot and Crack**

**Nelson's  
now able  
to unload!**

**Have Questions?  
Contact Crystal Lewins:  
Office: 1-800-441-7390 ext.127  
crystal.lewins@shims.com**

**GOT  
BASSWOOD??**



# Draft Sustainable Timber Harvest Analysis Report Available

**T**he DNR is seeking public comment on the draft analysis report that is part of our ongoing effort to update the sustainable timber harvest target for DNR-administered forest lands. DNR will be accepting public comments on the report through Dec. 30, 2017.

For this analysis, Governor Dayton directed the DNR to specifically determine whether harvesting 1 million cords per year from DNR forest lands is sustainable and if that is not sustainable to identify an alternate sustainable harvest number. This effort was supported by the Minnesota Legislature in the 2017 budget. The DNR's current harvest target is 800,000 cords annually.

To complete the analysis, the DNR contracted with the forest management consulting firm Mason, Bruce & Girard to perform an independent, third-party analysis of the DNR's timber harvest level. In addition, the DNR engaged a diverse stakeholder advisory group representing timber, conservation, environmental, and public landowner interests to work with staff and provide input throughout the process. The DNR will use the results of this analysis to help determine a sustainable timber harvest level and will communicate its decision to the Minnesota Legislature by March 1, 2018.

Past TPA President Dale Erickson of Erickson Timber in Birchdale



serves on the stakeholder advisory group, as does TPA Executive Vice President Wayne Brandt.

A link to the Draft Analysis Report completed by MB&G is available on the TPA's website: [www.mntimberproducers.com](http://www.mntimberproducers.com). The draft report does not identify a recommended sustainable harvest level. Rather, it displays a range of possible harvest levels given various model scenarios and management priorities. As a next step in the process, the public is invited to provide comments on the draft report through Dec. 30, 2017.

The project website includes a short video introducing the analysis

and draft report as well as a link to a public comment form. You are encouraged to use the online public comment form to provide feedback on the draft analysis report, but email and written comments will also be accepted at the addresses on the project website.

Input received, as well as input from the stakeholder advisory group and DNR staff will be considered in completing a final analytical report and making a well-informed decision on the sustainable harvest level for DNR forest lands.



**"Insuring the Timber Industry since 1946!"**

**800.934.LOGS**



# BABAC

TRACTION PRODUCTS

BABAC® Tire Chains are hand assembled and manufactured of high-quality materials, with special emphasis on a uniform hardness and tensile strength. Extensive testing and practical experiences have shown that BABAC® chains endure more wear, resulting in a longer service life.



### BABAC®'s Unique U-Form® Studs

are designed to stay upright when in contact with the ground versus studs welded on top of chain links, which lay over when in contact with the ground. This results in better wear and superior traction on ice and rock while also offering excellent tire protection.

### BABAC®'s Ring Chains

provide excellent traction for operating in mud or snow. All models feature alloy lugs that, unlike most other chains, are butt and wrap welded for unsurpassed strength and durability. Our slanted half links take out pre-load as the chain goes over the tire. This reduces friction and wear and allows for free tag chain movement. It is a standard feature on all of our ring chains.



Marketed  
Worldwide by



WALLINGFORD'S INC.

For the BABAC® dealer nearest you, contact us.

[info@wallingfords.com](mailto:info@wallingfords.com)

800.323.3708



[www.babactirechains.com](http://www.babactirechains.com)



# Blandin's #5 Paper Machine Shuts Down

**U**PM Blandin in Grand Rapids is permanently shutting down its number 5 paper machine by the end of the first quarter, 2018.

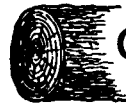
UPM made the announcement in October. The move will eliminate 150 jobs at the Grand Rapids mill.

At the same time, UPM is "streamlining internal processes and investing in automation" at its mill in Dörpen, Germany. That move will result in the elimination of 223 positions at that site.

"During the last years the demand for graphic papers has been declining - and the decline is expected to continue," said Winfried Schaur, executive vice president, UPM Paper ENA in a news release. "Our employees have always given their best, even under challenging market conditions, and we regret the impact of the planned measures on our personnel in Dörpen and Blandin. However, we have to adjust our operations to prospective customer demand and continuously improve our operations to safeguard the success of UPM Paper ENA in the long run."

The annual capacity of the Number 5 paper machine in Grand Rapids is approximately 128,000 tons of lightweight coated magazine and catalogue printing papers. Paper production related to paper machine number 6 is planned to continue at the Blandin site.

"UPM Paper is committed to leading our business in a sustainable manner," said Ruud van den Berg, senior vice president, magazines, merchants and office business at UPM Paper in a statement. "Consequently, the interests of our employees and of our customers are a central part of our plans. We will engage in a fair dialogue with employee representatives. At the same time we will continue delivering products of the highest quality and full service at all times during this process."



## CASS FOREST PRODUCTS INC.

BOX 1008 • CASS LAKE, MN 56633 • 218-335-2694

[www.cassforest.com](http://www.cassforest.com)

**Buying Fresh Logs: Red and White Pine**

**Pine Bolts: Jack, Red and White**

**For Specifications Call 218-335-2694**

## Protection, Performance and Peace of Mind.

We are staffed to provide the following endorsed programs for members of the Minnesota Timber Producers Association:

### EMPLOYEE BENEFITS

Group Health Insurance • Group Dental Insurance  
Insurance Section 125 Plans • Group Life Insurance



**Let Otis-Magie Help You Get There.**

**Daniel J. Zobel CIC**  
Certified Insurance Councilor

Duluth / 332 West Superior Street, Suite 700  
218.722.7753 -or- 1.800.241.2425

  
**OTIS-MAGIE**  
Insurance Agency, Inc.  
[www.otismagie.com](http://www.otismagie.com)



# Don Dens Sales INC.

(218) 384-3734 CARLTON, MN

www.dondenssales.com • www.galvstartrailers.com

HIGH STRENGTH · LIGHTWEIGHT  
**BUILT TO LAST**



In Stock – Escanaba!

**53' – 7 axles – Michigan Special**

6 bunks, empty weight 22,500 lbs, (2) FA Lifts and (2) RA Lifts, 445 Michelin tires on aluminum wheels **\$94,500 w/FET**



**Complete 5 Bunk Kits with Aluminum Stake and End Gates For Flatbed or Rail Trailers**

Kit includes: 10 Galvanized Bunk Bottoms, (20) Alum. 8' Stakes, Alum. Front and Rear Gates, Mounting Kit.....**\$7750**  
Galvanized Bunk Bottom w/ (2) 8' Aluminum Stakes and Hardware.....**\$600**  
Alum. Stake, 8'6.....**\$140**  
Alum. Stake, 8' .....**\$125**

Custom built galvanized truck racks for loader trucks.  
*Call for customized quote.*



20 bunk trailers in stock ready to go!

**\$46,500 w/FET Painted Black**

**New 2016 Galvanized 47' 3 Axle 5 Bunk Log Trailer**

All Alum. Wheels, Front and Rear Axles Lift, 30K Axles and Suspension, LED Lights, Empty Weight: 13,500# Painted, 13,800# Galvanized.



**Galvanized - Never Repaint Again!**

**High Strength Lightweight T1 Steel**

**\$48,500 w/FET Galvanized**

**TIRES & SERVICE**

# POMP'S TIRE SERVICE



- **Huge Inventory**
  - Passenger, light truck, truck, skidder & off-road tires
- **Delivery Routes Throughout Northern Minnesota**
- **The "Tire Professionals" since 1939**

**BRIDGESTONE**  
**Firestone**

**GENERAL TIRE**  
**Continental**

**GOODYEAR**  
**KELLY TIRES**

**MICHELIN**  
**Landis**

116 Ogden Ave.  
Superior, WI 54880  
800.420.6216

**POMP'S**  
**TIRE SERVICE**  
www.pompstire.com

201 N. Hoover Road  
Virginia, MN 55792  
888.545.9803

# Dobbs Logging: Lake States Region Outstanding Logger

**D**obbs Logging of Littlefork has been named Lake States Region 2017 Outstanding Logger by the Forest Resources Association and STIHL Incorporated.

Accepting the award on behalf of Dobbs Logging was Gordon Dobbs. He and twin brother Glen operate the business, started by their father, Elmer, 70 years ago.

At age twelve, Elmer Dobbs was already helping his father & grandfather work in the woods for the sawmill his grandfather operated. Using a horse and bow saw, Elmer started Dobbs Logging in 1947 in his hometown of Indus after graduating from high school. Seventy years later, Elmer is still involved, building and clearing roads. Gordon's son Ethan also works in the business, representing the 5th generation in the timber industry.

Nominations for FRA region awards are solicited from state forestry associations, and are reviewed by a selection committee. FRA awards criteria include performance in safety, forest management, timber harvesting practices, business management, and community involvement.

Dobbs Logging was nominated for the FRA Lake States Region award by Minnesota Timber Producers Association, after receiving 2017 Logger of the Year Award by the Minnesota Sustainable Forestry Initiative® Committee in April.

Notable factors leading to the selection include: Dobbs Logging recently completed a harvest on Minnesota's Tree Farmer of the Year, Gordon Dobbs' longstanding membership on the Minnesota Logger Education Board of Directors, and having a crew of experienced, well-trained employees.

FRA's Outstanding Logger Award program is designed to raise the visibility of professional logging contractors and to encourage other loggers to adopt the performance of the award winners. The regional



Gordon Dobbs (left) receives a STIHL 461 Chain Saw during FRA's Lake States Region Outstanding Logger Awards Ceremony from Dan Pherson, region sales manager for Midwest STIHL Inc. The company also received a plaque and a \$250 award, which the Dobbs family requested be donated directly to the Log-a-Load for Kids program in support of Gillette Children's Hospital.

award winner becomes a nominee for FRA's National Outstanding Logger recognition.

The Forest Resources Association Inc. is a nonprofit trade association concerned with the safe, efficient, and sustainable harvest of forest products and their transport from woods to mill. FRA represents

wood consumers, independent logging contractors, and wood dealers, as well as businesses providing products and services to the forest resource-based industries.

STIHL Incorporated serves as the sponsor of FRA's Regional and National Outstanding Logger Awards.

An advertisement for Harvester Bars.com. At the top, it says "ORDER ONLINE" in large white letters on a black background, followed by the website "www.HarvesterBars.com" in orange. Below this is a white box with black text: "Now you can purchase GB® harvester bars and accessories, Carlton® harvester saw chain and Ballantine hot saw teeth online at your convenience. Visit today and join our mailing list and be the first to learn about current sales and promotions. For assistance, speak with our experienced sales staff by calling (Toll Free) 1-855-255-0871". At the bottom of the ad is a close-up image of a chainsaw bar with a chain, featuring the "Titanium-XV" logo and the "GB" logo.



WHEN DOING  
WHAT'S RIGHT IS JUST  
**GOOD  
BUSINESS.**

*We have an attorney for you.*

- BUSINESS/CORPORATE LAW ◦
- » John Gasele » Robert Kanuit
- » Daniel Maddy » Paul Loraas

**FRYBERGER**  
— LAW FIRM —

[fryberger.com](http://fryberger.com)

**DULUTH SIGN**

Truck Graphics of any kind.  
"We have you covered!"

116 W. Superior St, Duluth, MN 55802  
218-722-2569 • [duluthsign.com](http://duluthsign.com)

BITCO has been serving the forest products industry for more than 70 years and is proud to partner with Northern Capital Insurance Group to serve the needs of TPA members.



Northern Capital has been serving the Forest Products Industry for over 20 years specializing in workers compensation, property, general liability and truck/auto insurance coverages.

For more information contact Northern Capital at 1-800-676-8818 or [info@northerncapital-mn.com](mailto:info@northerncapital-mn.com)

# TPA Board Meets—Tours Norbord

**T**he TPA Board of Directors held its fall meeting in Bemidji, in October. The board heard reports from various TPA committees and discussed legislative issues to be addressed next year. The board also heard a presentation from Jay Eystad of Northern Capital on TPA's fire extinguisher program (information on the program appears elsewhere in this issue of the Timber Bulletin).

After the business portion of the meeting, board members headed to the Norbord mill in Solway for a tour of its OPSB manufacturing operations. Norbord Mill manager Cam Lewis and procurement forester Jerry Richards led a presentation on mill operations as well as the tour.



TPA directors listen to presentations at October's board meeting.



TPA directors toured the Norbord mill in Solway as part of the fall board meeting.



# Northern Capital/TPA Fire Extinguisher Program

**T**PA members are able to purchase Halon "clean agent" fire extinguishers at reduced prices, thanks to a program developed by Jay Eystad of Northern Capital Insurance.

Benefits of Halon extinguishers include their extreme effectiveness because they take the oxygen out of the fire. In addition, Halon extinguishers don't leave a residue, which helps protect the machine from corrosive damage. For these reasons, Halon extinguishers are often used in computer and communications rooms throughout the electronics industry, as well as in military ships and vehicles and aircraft of all sizes.

Through the Northern Capital/TPA program, large extinguishers (equivalent to 10-pounds dry) are

\$275 each, and small extinguishers (equivalent to five-pounds dry) are \$210. To encourage their purchase and use, a credit of \$100 per extinguisher per year for two years is being provided on marine/fire policies by Northern Capital's carrier, Hanover.

Morris Fire Control is the fire extinguisher for the program, which is available only to TPA members and Northern Capital insureds.

"We're happy to provide these extinguishers to TPA members," Eystad said. "Hanover and Northern Capital are willing to provide this incentive because Halon extinguishers do an excellent job at preventing loss to their equipment, which benefits everyone."



To participate in the Halon fire extinguisher program, call Eystad at 218-255-0446.

## NORTHERN TIMBERLINE EQUIPMENT, INC.

AUTHORIZED DEALER FOR

**BARKO HYDRAULICS**

**BARKO 295ML TRAILER TRUCK MOUNT**



- Used Equipment Sales
- New & Used Parts, Tires & Chains for Most Types of Logging Equipment
- Distributor for:



**HanFab Slashers**



For More Information, Call:

**CAM HARDWIG**

**Ph. (218) 278-6203**

**Fax (218) 278-6716**

6000 County Rd. 8 • Littlefork, MN 56653

# USFS Officials Meet with Industry Leaders in Duluth

In October, Duluth logger Josh Hull led a tour of his logging site for timber industry representatives from around the country, as well as U.S. Forest Service staff from Washington, D.C. It was part of the three-day Federal Timber Purchasers Committee meetings, held this year in Duluth.

Among the high-ranking Forest Service officials attending the Duluth meetings were Chris French, associate deputy chief of the Forest Service, and Allen Rowley, the director of forest management for the USFS.

In all, 74 industry and Forest Service representatives from across the country attended the Duluth event to discuss forest management issues on federal lands, including future timber harvest targets, and sale administration issues on federal timber sales.



Josh Hull of Hull Forest Products explains his harvest activities to U.S. Forest Service officials and Federal Timber Purchasers committee members.



U.S. Forest Service Staff from Washington, D.C., are joined by industry reps from around the country in touring the Hull Forest Products jobsite north of Duluth.





Red pine is forwarded at the Hull Forest Products jobsite during the Federal Timber Purchasers tour in October.

**25 Years of Commitment to Excellence!  
Leading the way in Innovation & Design!**



8450 County R  
Suring WI 54174  
[www.greatlakesmfg.com](http://www.greatlakesmfg.com)  
**For Pricing Call  
Toll Free:  
1-877-248-5677**



**STEEL - ALUMINUM COMBO DROP DECK CRIB TRAILER**

**Our Patented Gusseted Steel Bunks, GLT Alum-A-Log  
Stakes and All Aluminum Headboards.**



**Designed &  
Custom Built  
to meet your  
needs.**



**BOLT-ON BUNK SYSTEM W/ 2 AXLE CRIB PUP**



# US House Passes Bill to Improve Forest Management by Cutting Red Tape

In November, the U.S. House of Representatives approved the Resilient Federal Forests Act of 2017, a bipartisan bill to expedite and improve forest management activities by cutting the red tape for the U.S. Forest Service.

The measure passed 232-188.

## Timber Talk

Minnesota congressmen who voted in favor of the measure included Rep. Rick Nolan, Rep. Collin

Peterson, Rep. Tom Emmer, Rep. Jason Lewis, and Rep. Erik Paulson.

The measure is designed to prevent wildfires, by giving the Forest Service and the Bureau of Land Management the necessary tools to immediately begin improving the health of federal forests. It will streamline management activity permitting processes, without sacrificing environmental protections, so that vital projects like removing dead wood and timber and reducing the spread of devastating insect infestations can move forward more quickly.

The measure now heads to the U.S. Senate for consideration.

## Safety Belt Usage Among Commercial Truck and Bus Drivers Rises to New National Levels

Safety belt usage by commercial truck and bus drivers rose to a record level of 86 percent in 2016, compared to just 65 percent usage in 2007, according to the results of a national survey released by the U.S. Department of Transportation's Federal Motor Carrier Safety Administration (FMCSA).

The 2016 survey observed nearly 40,000 commercial drivers operating medium- to heavy-duty trucks and buses at more than 1,000 roadside sites nationwide. The survey found that safety belt usage for commercial drivers and their occupants was highest by trucks and buses traveling on expressways at 89 percent, compared to 83 percent on surface streets. Male truck and bus drivers outpaced their female counterparts by buckling-up at a rate of 86 percent to 84 percent, respectively.

Since 2007, FMCSA, in collaboration with the National Highway Traffic Safety Administration (NHTSA) has conducted the *Safety Belt Usage by Commercial Motor Vehicle Drivers Survey* six times. In each survey, safety belt usage by commercial drivers has been shown to be steadily increasing.

States with "secondary" seat belt laws (law enforcement officers may only stop drivers for violations other than not being buckled) have nearly matched states with "primary" seat belt laws (officers can stop and ticket drivers and occupants for simply not wearing a safety belt) – 84 percent compared to 85 percent – in the most recent survey.

**USED REPAIR PARTS**

Wheel Loaders, Crawlers, Track Excavators  
Loader Backhoes, Skidders, Skid-Steer  
Loaders, Engines and Transmissions  
*"Rely on our experience—Est. 1967"*

**1-800-626-6046**

**Schaefer Enterprises**

www.sewlparts.com - parts@sewlparts.com

**NTPD** 4535 State Route 3 N • PO Box 136  
Wolf Lake, IL 62998

**Mid-States®**  
EQUIPMENT, INC.  
HYDRAULICS

*The hydraulic people...*

*...wishing you*



**Don't forget to call us for all of your hydraulic needs**














**CORPORATE OFFICE:**  
Medford, WI • 715-748-5565

**BRANCH OFFICE:**  
Appleton, WI • 920-687-9750

sales@midstateshydraulics.com  
**www.MidStatesHydraulics.com**



*Track Shown  
CX Climbing Track*

# TRACTION SOLUTIONS for Harvesters, Forwarders and Skidders.

**CLARK TRACKS** [www.clarktracksusa.com](http://www.clarktracksusa.com)  
high performance for maximum work life

Clark Tracks specialize in developing and manufacturing forest machine tracks to suit both cut-to-length machines and skidders. We supply tracks in various sizes and designs to suit virtually any terrain, the harshest climates and all machine types. From tracks for climbing to tracks with extreme flotation, Clark Tracks has something to suit your needs.

 **NORDCHAIN** SINCE 1930 [www.nordchaintirechains.com](http://www.nordchaintirechains.com)

NordChain is the new brand name for the same products that have been produced since 1930, formerly known as Gunnebo. Today, NordChain product lines offer proven quality and are characterized by outstanding traction and long service life, as well as excellent fit and overall performance.

**Nordic Traction Group**, the parent company of Clark Tracks, Scotland and Nordchain, Finland, offers a full line of traction products. Nordic Traction has partnered with Wallingford's Inc., North America's largest manufacturer and distributor of logging supplies, to market these tested and proven products throughout all of USA and Canada.

Call or visit Wallingfords  
online to learn more.

**800.323.3708**

Clark Tracks and NordChain are marketed in North America exclusively by Wallingford's Inc.

Find us on 



[www.wallingfords.com](http://www.wallingfords.com)

*Tire Chain Shown:  
SuperStud*

 **NORDCHAIN** SINCE 1930

# On the Markets

**T**he *Timber Bulletin* publishes information regarding results of a sampling of recent timber sales and other market indicators, as well as other market-related news items.

## Recent Timber Sales Average prices, as reported by each agency

### Agency Regular Intermediate

#### Hubbard County

October 9—Oral Auction

Aspen Mixed	NA	\$46.45
Aspen Pulp	NA	\$42.58
Oak Mixed	NA	\$14.98

All 9 tracts offered during the sale were purchased.

#### Becker County

October 13—Oral Auction

Aspen Mixed	\$46.16	NA
Birch Mixed	\$17.56	NA

All 10 tracts offered during the sale were purchased.

#### Cass County

October 26—Oral Auction

Aspen	\$39.23	\$27.31
Red Oak	NA	\$42.58
Ash	\$10.00	NA

All 7 tracts offered during the sale were purchased.

#### Clearwater County

November 2—Oral Auction

Aspen Pulp	NA	\$36.05
Birch Pulp	NA	\$14.20
Oak Pulp	NA	\$18.30
Basswood Pulp	NA	\$13.17

All 8 tracts offered during the sale were purchased.

#### St. Louis County

November 2—Oral Auction

Aspen Pulpwood	\$29.51	NA
Blk Spruce Pulpwood	\$34.38	NA
Red Maple Pulpwood	\$ 5.40	NA
Balsam Fir Pulpwood	\$17.22	NA
Birch Pulpwood	\$ 7.52	NA

22 of the 26 tracts offered during the sale were purchased.

#### Koochiching County

November 15—Oral Auction

Aspen P/B	\$32.99	\$36.91
-----------	---------	---------

Spruce P/B	\$20.44	\$22.13
Balsam P/B	\$11.37	\$11.89

28 of the 31 tracts offered during the sale were purchased.

#### DNR—Baudette Area

November 21—Oral Auction

Aspen Species (WC)	\$35.75	\$31.08
Black Spruce (WC)	\$29.01	\$12.49
Jack Pine (WMP)	\$26.14	\$12.78
Norway Pine (WMP)	\$50.16	\$16.91

14 of the 15 tracts offered during the sale were purchased.

#### Cass County

November 30—Sealed Bid

Aspen	\$46.68	\$22.68
Birch	\$25.60	\$10.40
Red Oak	\$26.72	\$13.43

All 6 tracts offered during the sale were purchased.

#### DNR—Hibbing Area

November 30—Sealed Bid

Trembling Aspen (WC)	\$43.09	\$45.48
Pine Species (WMP)	\$38.51	\$36.23
Balsam Fir (WC)	\$23.80	\$19.99
Nrthrn Hrdwds (WC)	\$13.07	\$19.00

11 of the 12 tracts offered during the sale were purchased.

#### Itasca County

December 1—Oral Auction

Aspen	\$35.04	NA
Red Pine	\$52.34	NA
White Spruce	\$15.01	NA
Balsam	\$17.85	NA
Maple	\$ 9.94	NA
Paper Birch	\$12.75	NA

Data above is for the regular and intermediate auctions combined, as reported by the county. 45 of the 51 tracts offered during the sale were purchased.

#### Aitkin County

December 4—Oral Auction

Aspen Pulp	\$32.40	NA
Aspen P/B	\$22.70	NA
Oak P/B	\$16.55	NA
Maple P/B	\$11.03	NA

22 of the 45 tracts offered during the sale were purchased.

#### DNR—Aitkin Area

December 4—Oral Auction

Trembling Aspen (WC)	\$28.70	NA
----------------------	---------	----

Aspen Species (WC)	\$26.35	\$36.36
Aspen Species (WMP)	NA	\$41.11
Norway Pine (WMP)	NA	\$46.53

11 of the 20 tracts offered during the sale were purchased.

#### DNR—Backus and Deer River Areas

December 5—Oral Auction

Aspen Species (WC)	\$40.11	\$39.26
Norway Pine (WMP)	\$23.96	\$38.74
Balsam Fir (WC)	\$16.25	\$23.57

All 23 tracts offered during the sale were purchased.

#### DNR—Littlefork Area

December 6—Oral Auction

Aspen Species (WC)	\$35.88	\$38.13
Pine Species (WMP)	\$48.13	\$50.96
Black Spruce (WC)	\$13.03	\$15.15
Mixed Spruce (WMP)	\$50.97	\$31.86

20 of the 23 tracts offered during the sale were purchased.

#### Beltrami County

December 5—Sealed Bid

Aspen Pulp	\$33.05	NA
Red Pine P&B	\$35.43	NA
Jack Pine P&B	\$39.35	NA

All 9 tracts offered during the sale were purchased.

#### Beltrami County

December 7—Oral Auction

Aspen Pulp	\$39.31	NA
Red Pine Bolts	\$66.63	NA
Basswood P&B	\$16.80	NA
Maple Pulp	\$14.61	NA

All 14 tracts offered during the sale were purchased.

Products:

PB= Pulp and Bolts  
WMP= Woodsrun mixed Products  
WC= Woodsrun cordwood  
ST=Sawtimber  
WST=Woodsrun Sawtimber  
PW=Pulpwood  
SLV=Sawlogs/Veneer

Email: [auction@wausauauctioneers.com](mailto:auction@wausauauctioneers.com)  
[www.wausauauctioneers.com](http://www.wausauauctioneers.com)

**wausau/auctioneers**  
SALES CORP / P.O. BOX 1311 • WAUSAU, WI • 54402-1311  
PH: (715) 536-1955 • (800) 432-1922





## CONFIDENCE BY DESIGN.

THE PROOF IS IN THE EFFICIENCY, PRODUCTIVITY AND UPTIME.

Tigercat's hydrostatic driveline is the most efficient, reliable choice for moving timber in tough terrain. Optional EHS offers higher travel speed on level ground and more powerful tractive effort when the going gets tough. In-house developed axles ensure drivetrain components are well matched to ever-increasing performance demands. The Tigercat FPT Tier 4 engine solution is simple and field proven, offering greater efficiency and long-term reliability.

Feel confident knowing Tigercat E-series skidders are backed by professionals who care about your productivity, uptime and cost per ton.

***TITAN***  
***MACHINERY***

DULUTH, MN  
218.727.3038  
[WWW.TITANMACHINERY.COM](http://WWW.TITANMACHINERY.COM)

PHONE	519.753.2000
EMAIL	<a href="mailto:comments@tigercat.com">comments@tigercat.com</a>
WEBSITE	<a href="http://www.tigercat.com">www.tigercat.com</a>
SOCIAL	<a href="http://www.facebook.com/tigercat">www.facebook.com/tigercat</a>

**Tigercat**<sup>®</sup>  
Tough • Reliable • Productive

LOGGERS OF THE PAST . . .

# Sister Amata and the Lumberjack Hospital Ticket

by J. C. Ryan

This story is reprinted from an earlier *Timber Bulletin*—one of the first of “Buzz” Ryan’s ever-popular contributions to these pages. The *Bulletin* will continue to reprint selected stories from the memories he recorded for us.—*Editor*



Today, most everyone working in the timber industry is covered by workmen’s compensation or some sort of hospitalization insurance. But, I wonder how many know about the first hospitalization plan covering the lumberjacks in northern Minnesota.

For years there was no plan. However, a few companies did set up small hospitals, usually in towns nearby their operations, to take care of anyone hurt in their camps. These hospitals usually were very crude, temporary buildings staffed by ladies with little experience in nursing and as such served more or less as a rest home.

Here the patient received good food and rest and usually recovered from a minor injury. If he was hurt badly or very ill, he was sent to the hospitals in the larger towns.

In 1888, the Sisters of St. Benedict opened their first hospital, known as St. Mary’s Hospital, at 20th Avenue West and Third Street in Duluth. This hospital was to serve the lumbermen of northern Minnesota, and its patients were mostly lumberjacks. The nationalities of the first 730 patients were

listed as 478 Swedes and Norwegians, 177 Irish, 74 Americans and 1 Yankee. By 1898, the hospital was moved to its present location at Fifth Avenue East and Third Street. At the time, it was the last word in modern hospital construction.

To serve lumberjacks better, St. Michael’s at Cass Lake, St. Joseph’s at Brainerd, St. Anthony’s at Bemidji, St. Vincent’s at Crookston and St. Benedict’s at Grand Rapids soon opened.

The hospital administration, in their enthusiasm to administer to the sick, would’ve been in financial trouble had they not conceived the imaginative medical insurance system making possible their survival as well as furnishing service to the lumberjacks.

This plan was to send a Sister into the woods to sell hospital tickets to the lumberjacks. The cost of the ticket entitling the purchaser to hospital care for a year in any of the serving hospitals varied in different accounts, from \$1 to \$5. It was a very good deal for the lumberjack, and each man that was injured or became ill was thankful he owned a ticket.

Sister Amata, known as the “Lumberjack Sister,” was given the job of going into the camps to sell the tickets. Sometimes she was accompanied by other Sisters; but much of the time she was alone, going from camp to camp by tote team, railroad caboose or walking. She was a very large, strong woman, standing over 6 ft. and weighing around 200 lbs.

St. Mary’s Hospital, in their Diamond Jubilee report in 1963, had this to say:

“Sister Amata, on the lumberjack diet of boiled potatoes and milk gravy, made from pork fat, became in time, a giant of a woman. But her great size in no way handicapped her in entering a camp on snowshoes in winter, and while she pursued the men all day, she darned their socks at night and listened with a soft heart to their lonesome talk about wives and children. She would ride a caboose into camp with the railroad engineer; but once her moneybag was full she would bake pies for the men for their dinner that night, as only a woman could bake them, they said. In time, Sister Amata became a saga of the northwoods, and was fondly called their “Sis-





ter Lumberjack.” The Sisters honored her as the one who kept their hospitals from going broke. When Minnesota passed its Working Men’s Compensation Laws in 1913, Sister Amata’s work in the lumber camps was over, but reviewing her years of work one might also name her a forerunner of the present public relations person and a pioneer in putting successfully into effect – a pioneering hospitalization plan.”

As a boy, I met Sister Amata twice as she made the rounds of the camps. She would arrive in camp around midafternoon. The camp foreman always made it a point to see that she had transportation to another camp, if possible. She would enter the bunkhouse after the evening meal and pass out pamphlets to the men. After a prayer and a little talk, she would sign up the men and renew expired tickets.

The lumberjacks were always very cooperative and had great respect for her. Sometimes she would bring another Sister who would sing or play a violin. Once in a while some of the jacks with musical talent would volunteer to sing or play or help in any way they could. Most of the men knew of someone that had spent six months or more in the hospital and returned to camp telling of the good care they had received.

After the meeting, the Sister would usually spend the night in the office where the clerk made out a check covering all the men that had signed up and not paid her in cash.

She liked to sleep in a top bunk; and Paddy McLaughlin, one of the old camp foremen, said she could jump from the deacon’s seat to the top bunk like a rabbit. In smaller camps where there was no office, she would sleep in the bunkhouse with the men. During the year she would visit almost every camp in northern Minnesota.

The December 19, 1914 issue of *Colliers Weekly*, then the leading weekly magazine of the day, published their prize winning story of the year, “The Hospital Ticket,” by William Fitzpatrick.

This was a fiction story with Bemidji and St. Anthony’s Hospital, along with many if the local camp foremen and places around Bemidji as its setting.

The story was about a tough “Irish Polack” who was hurt and was taken to the hospital where he remained six months to be nursed back to health by the Sisters. He returned to camp and got into a fight with another camp bully because of the remarks made by the bully about the Sisters and their hospital tickets. It was one of the best stories I have read about the logging days in northern Minnesota, and it portrayed the rough life of the lumberjack accurately.

In later days, some of the larger companies made contracts with local hospitals and issued a hospital ticket to each employee, charging him from \$1.00 to \$2.50 per month.

Around the turn of the century, railroad companies also set up their own hospitals and charged their employees monthly for hospitalization. But it was the hospital ticket of the St. Benedict Sisters that took care of most of the sick and injured lumberjacks from 1890 to 1913.



St. Mary’s Hospital, Duluth



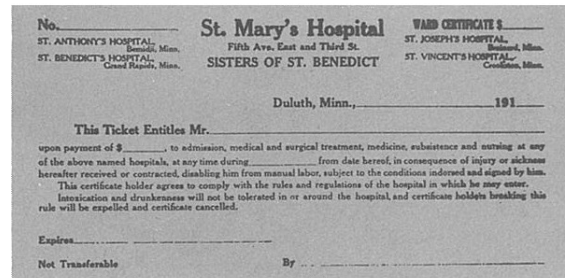
St. Michael’s Hospital, Cass Lake



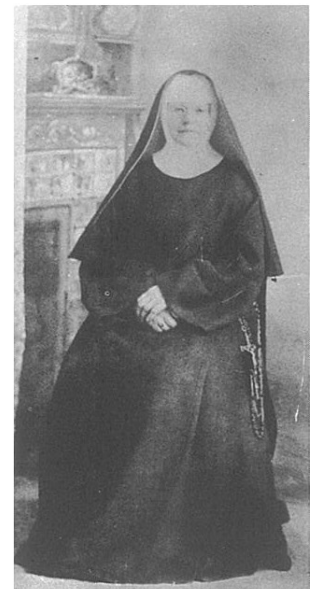
St. Benedict’s Hospital, Grand Rapids



St. Joseph’s Hospital, Brainerd



The hospital ticket sold to woodsmen.



Sister Amata



A lumber camp in the early days



St. Vincent’s Hospital, Crookston



St. Anthony’s Hospital, Bemidji

# Classifieds

To serve our readers better, the Timber Bulletin offers free classified ads of up to 85 words to all members and associate members of the Minnesota Timber Producers Association. All ads must be submitted in writing to the Association office. The MTPA assumes no responsibility for ad contents and accepts free ads on a first-come, first-served basis within space limitations.

## HELP WANTED

Truck driver, full time, year around, hauling tree-length wood in Southeast Texas, experience preferred. 409-489-0113

## WANTED

Barrel stave logs – White Oak and Burr Oak butt cuts 12-inch diameter and up – random lengths  
For more information call Robert Staggemeier at Staggemeier Stave Co. Inc. Caledonia, MN 55921  
Office: 507-724-3395  
Cell: 608-792-7598

## FOR SALE

750 Deihl Rip Saw  
Available on sight for more information contact  
Pierce Lumber  
25783 Pierce Lane  
Pelican Rapids, MN 56572  
218-863-8523 or 218-329-9185

## FOR SALE

646 G John Deere Skidder (98), has 10,000 hrs. on it but was over-hauled at 9,000 hrs., also has dual arch. Asking \$45,000 for it.  
For more information please call Bruce Junker at 218-244-1803.  
Located in Littlefork, MN



## Gard Specialists Co., Inc.

**GREGG WANDSNIDER**  
AREA REPRESENTATIVE

### GUARD AGAINST REPAIR & DOWNTIME

DISTINCTIVELY UNIQUE MAINTENANCE PRODUCTS OF UNUSUALLY HIGH QUALITY

715-417-0733 CELL gwgardrep@centurytel.net  
715-294-4511 PHONE www.gardspecialists.com  
715-294-4515 FAX Osceola, WI



## RIHM KENWORTH

### Toward the Best Customer Service

St. Paul, MN  
651.646.7833 • 800.988.8235

Sauk Centre, MN  
320.352.8540 • 855.704.9211

Albert Lea, MN  
507.552.1340 • 877.744.6591

Duluth/Superior  
715.395.5350 • 800.341.1666

Lake Elmo, MN  
651.272.4480 • 844.220.2633

**1932 - 2017**  
**CELEBRATING 85 YEARS IN BUSINESS**

[www.rihmkenworth.com](http://www.rihmkenworth.com)

## ADVERTISERS INDEX

Bitco Insurance Companies .....	19
Cass Forest Products .....	16
Compeer .....	4
Don Dens Sales .....	17
Duluth Sign .....	19
Fryberger, Buchanan, Smith & Frederick, P.A. ....	19
GARD Specialist .....	30
Great Lakes Trailers .....	23
Hancock Fabrication Inc. ....	13
Hedstrom Lumber Co. ....	7
Klinner Insurance .....	14
Mid-States Equipment .....	24
Nelson Wood Shims .....	13
Northern Timberline Equipment .....	21
Nortrax .....	31
Otis-Magie Insurance Agency .....	16
Pomp's Tire .....	17
Rice Blacksmith Saw & Machine .....	2
Rihm Kenworth .....	30
Road Machinery & Supplies .....	32
Schaefer Enterprises .....	24
Titan Machinery .....	27
Wallingford's .....	6, 15, 18, 25
Wausau Sales Corp. ....	26
Ziegler .....	5





JOHN DEERE



## **OUTRUN™** HESITATIONS.

### **MAXIMIZE PRODUCTIVITY**

John Deere M-Series Feller-Bunchers make every operator more productive. The New Rapid Cycle System (RCS) combines automated felling-head arm cycling with simple boom control dramatically reducing operator fatigue while increasing efficiency. Save time. Cover more area.

See Nortrax today for a full set of solutions to help you outrun any obstacles to your success.

**NORTRAX**  
[www.nortrax.com](http://www.nortrax.com)

Bemidji, MN **888.450.1996**

Duluth, MN **800.450.7456**

Grand Rapids, MN **800.450.9427**

Merrill, WI **715.536.0633**

Ashland, WI **800.472.6685**

Chippewa Falls, WI **800.691.2924**

Escanaba, MI **800.562.6174**





# FORESTRY QUALITY WITH THE KOMATSU ADVANTAGE



ROAD MACHINERY & SUPPLIES CO.  
**PROUDLY SERVING ITS CUSTOMERS SINCE 1926**

**DULUTH, MN**  
218-727-8611

**VIRGINIA, MN**  
218-741-9011

Komatsu is an engineering company with a dedicated focus on forestry that will bring your business distinct advantages, including:

- Technical Innovations
- Product Support
- Manufacturing Quality
- A Reliable Partner

Komatsu delivers world class quality, reliability and support—All of the tools you'll need to get the job done.

**WWW.RMSEQUIPMENT.COM**